

/

2010 / 01 / 05

2009 / 09 / 28

**Abstract**

The study of multi classification of data has become one of the important issues which geographical studies focus on especially those which take their data from satellites.

Two ways of classification has been taken into consideration, each one completes the other. The two ways are used together to get the benefits of both and to obtain the full advantage. The data of remote sensing were chosen to be tested.

The system suggested is a software package which consists of neural networks of supervised learning and neural networks of unsupervised learning to classify the land of (Al-Mosul Dam) in Mosul city.

The best use of remotely sensed data is by using the methods of supervised and unsupervised classification consequently which improve the primary input data in the classification. Thus, a high degree of accuracy and efficiency in the classification are obtained.

It is worth mentioning that software package used in the integration consists of the nets: the supervised ART-II neural network and the unsupervised Kohonen neural network.

---

---

( )

(Koheneen)

(ART-II)

.1

.[15]

.[12]

.[14]

(Supervised learning)

(Desired output)

(Input data)

(Perceptron)

.ART-II

ART-I

---

---

(Unsupervised)

.(Self Organizing Network)

.[3]

[8] (Key et al,1989)

SMMR

[9] (Lee et al,1990)

AL-)

(TM)

(ART-II)

[4] (Rawi&Casanova, 1999

[11] (Mather et al,1998)

(Kohonen)

(TM)

[1] (AL-Omran,2000)

.2

:

[14] (Wilkinson et. al ,1995)

AL-)

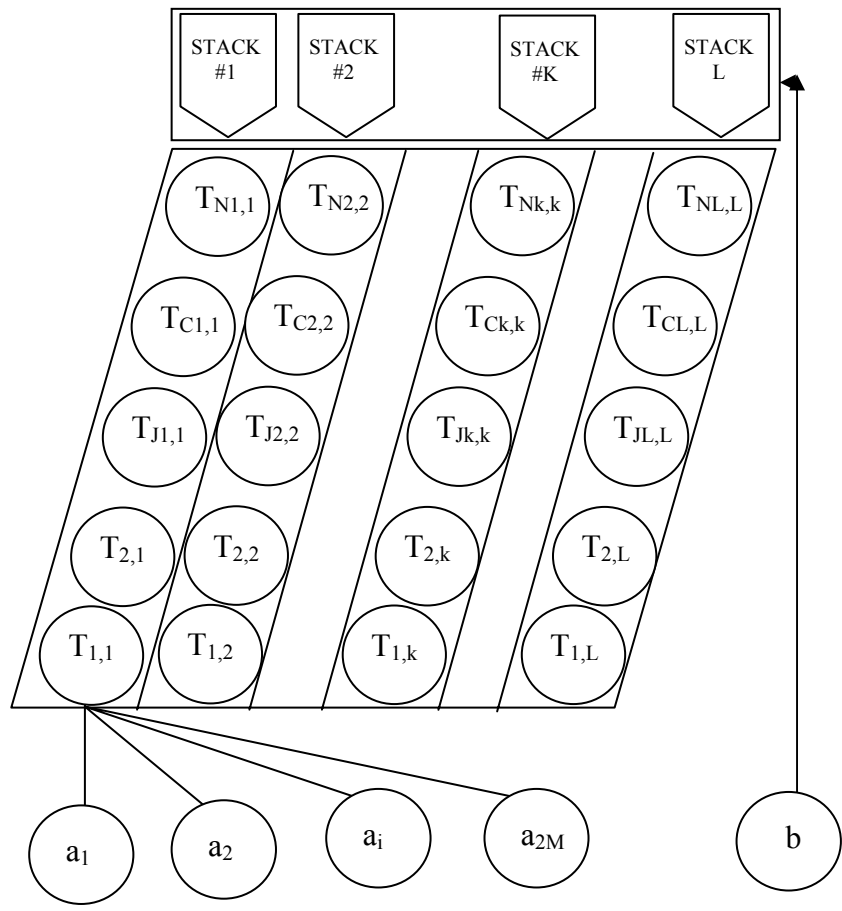
Maximum Likelihood

[5] (Shaumam,2001

(Kohonen( SOM))



ART-I  
 (ART II)  
 .ART-I  
 (ART I) (ART II)  
 ART I Fuzzy ART  
 ART-II (N)  
 k Nk N L Stack  
 $N_k; k=1..L$  N  
 (2-3) ART II  
 (Class Code) (k) stacks "Stack"  $N_k$   
 $N_k$  .(Committed Nodes)  
 stack ( )



ART-II

:(1)

: :2-3

MPNN PNN MLP

(Incremental)

( )

.[4]

: :3-3

(Teuvo Kohonen)

(Self Organazation Map SOM)

(unsupervised nets)

(two layers)

(nods)

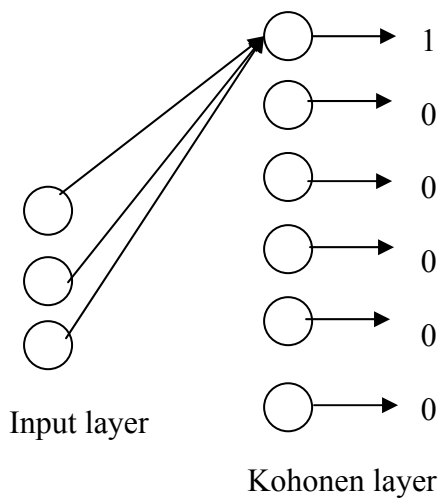
(input layer)

(nodes)

(output layer)

(kohonen layer)

[13].



Kohonen layer

kohonen

:(2)

[6]

(ARTKN) .4

ARTKN.

(1)

" ( T) (2)

T "(1) (stacks)

$$T_{j_k k} = \frac{\sum_{i=1}^{2M} (A \wedge W_{ij_k k})}{\alpha + \sum_{i=1}^{2M} W_{ij_k k}} ; j_k = 1 \dots C(k); k = 1 \dots L \dots (1)$$

(k) stack C(k)  
 (minimum) ^

(I) (k) stack (J<sub>k</sub>) W<sub>ij<sub>k</sub>k</sub>  
 α (A) M (I=1...2M)  
 α (Choice Parameter)  
 (0.01-0.02)

(2) (3)

$$MV = \sum_{i=1}^{2M} (A_i \wedge W_{iK}) / M \dots (2)$$

(Match Value) MV

" (p-vigilance param.) (4)

.(1-0)

( ) (5)

0

(6)

(1-0)

$\alpha$  (7)

" (neighborhood size)  
 .(tt=1) (winner node)

(8)

$$d_j = \sum_{i=1}^m w_{ij} * x_i \dots\dots(3)$$

$x_i$

(Output)

$d_j$

(i)

$w_{ij}$

(j)

(j=1,2,3,...,m)  $d_i$  (9)

(weight update ) (10)

: (neighborhood size)

$$w_{ij} (t+1) = w_{ij} (t) + \alpha (t) * [(x_i) - w_{ij} (t)] \dots\dots\dots(4)$$

:t

(11)

tt-1

tt

$\alpha$

13

.8

tt=tt+1

$x_i$

(12)

.(max, $d_j$ )

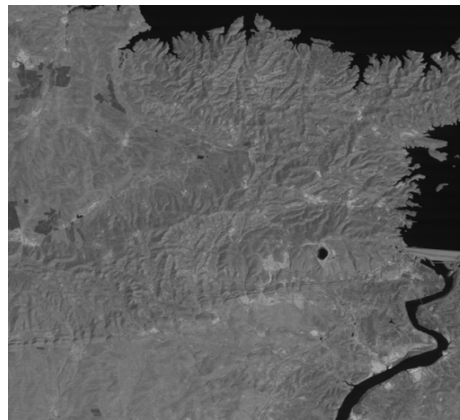
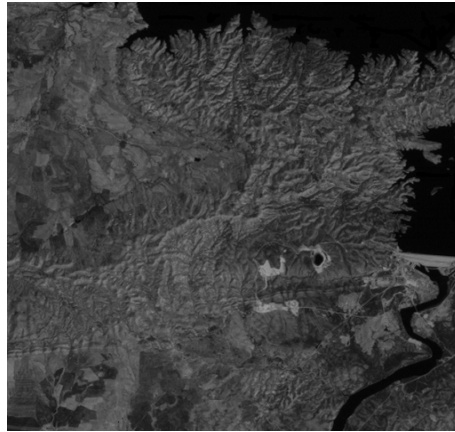


ARTKN

C++

.5

TM



(2 4 3)

:(3)



:

:

(0.52-0.59)

(0.63-0.69)

(0.76-0.9)

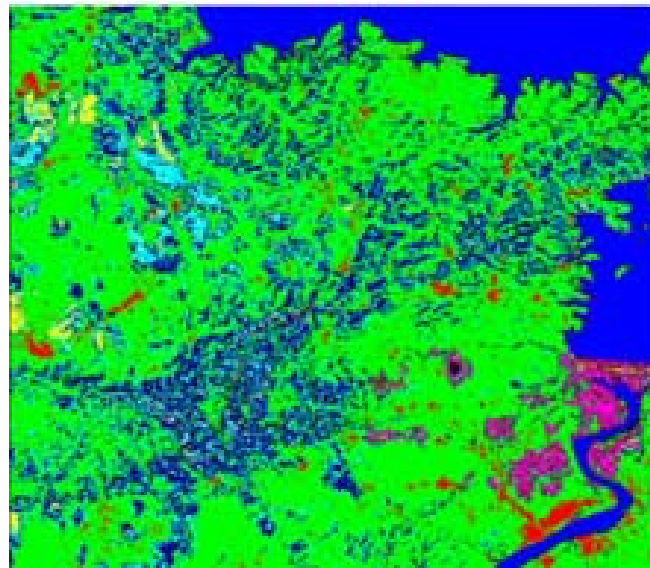
7

7

(ART-II)

(-5)

ART II



ART-II

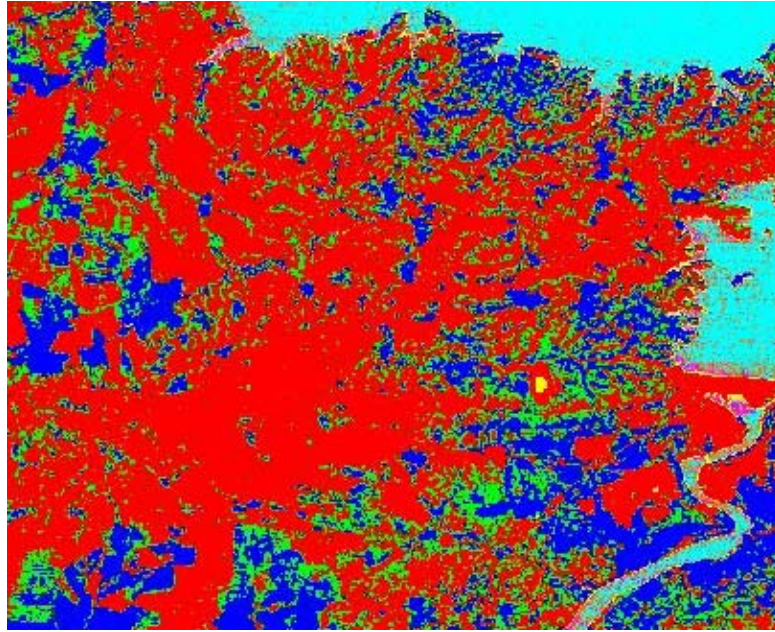
:(-5)

(Kohonen)

(-5)

(Trail & Error)

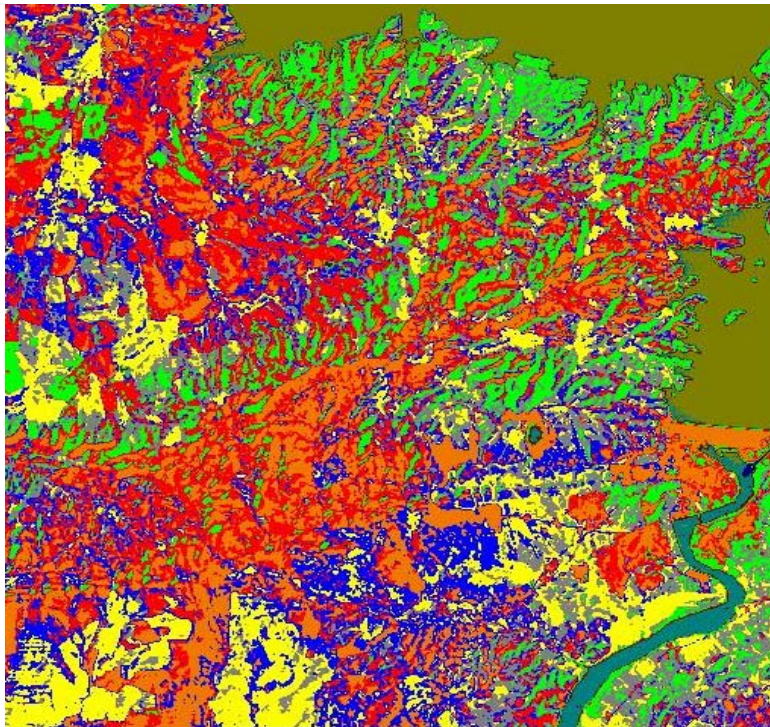




Kohonen :(-5)

ARTKN (-5)

ART II



ARTKN :(-5)

(1)

ARTKN

.ART II

:(1)

<b>%ARTKN</b>	<b>% Kohnen</b>	<b>% ART-II</b>		
<b>95</b>	<b>85</b>	<b>80</b>		<b>1</b>
<b>80</b>	<b>70</b>	<b>55</b>		<b>2</b>
<b>90</b>	<b>80</b>	<b>59</b>		<b>3</b>
<b>87</b>	<b>72</b>	<b>60</b>		<b>4</b>
<b>90</b>	<b>60</b>	<b>85</b>		<b>5</b>
<b>95</b>	<b>60</b>	<b>77</b>		<b>6</b>
<b>88</b>	<b>70</b>	<b>60</b>		<b>7</b>
<b>80</b>				<b>8</b>
<b>60</b>				<b>9</b>
<b>79</b>				<b>10</b>

.6

:

(1)

(2)

(3)

---

---

	(4
Kohenen ART-II	
	(5
)	
	.(.....
	: .7
	(1
	(2
	(3
	.(Integration )

- 1) Al-Omran D. A., 2000: A Project Report Submitted To The College Of Science, University Of Baghdad.
- 2) Al-kuhla L. TH., 2004: M. Sc. Thesis, Remote Sensing Center, University of Mosul, Iraq, "Integration between conventional & Neural network Approachs for unsupervised classification of Remotely Sensed Data".
- 3) Al-Nuaimy K. M. S., 2002: M. Sc. Thesis, Remote Sensing Center, University of Mosul, Iraq, "Construction of a proposed system of Multiple Classification of Remotely Sensed Data".
- 4) Al-Rawi, K. R., Gonzalo C., Arquero, A., 1999a: Supervised Art-Ii: A New Neural Network Architecture With Quicker Learning Algorithm, For Classifying Multi Valued Input Patterns. To Be Presented In The European Symposium On Artificial Neural Network ESANN, Bruges, Belgium.

- 
- 
- 5) Al-Shumam T. A. K., 2001: An Integrated Software For Remotely Sensed Data Classification, M. Sc. Thesis, University of Mosul.
  - 6) Goncalves M. L., M. L. A. Netto, 2008: "An unsupervised method of classifying remotely sensed images using Kohonen self-organizing maps and agglomerative hierarchical clustering methods", International Journal of Remote, Volume 29, Issue 11.
  - 7) Kanellopoulos, I. Wilkinson, G. G. Megier, J., 2002: "Integration of neural network and statistical image classification for land cover mapping" Joint Res. Centre, Comm. of the Eur. Communities, Spray.
  - 8) Key J., Maslanic A. And Schweiger A. J. 1989: Classification of Merged AVHRR and SMMR Artic Data with Neural Network, Photogrammetric Eng. And Remote Sensing, No. 55, pp(1331-1338).
  - 9) Lee J., Wegner R. C., Sengupta S. K. And Welch R. M., 1990: A Neural Network Approach to Cloud Classification, IEEE Transaction on Geo science and Remote Sensing, No. 281, pp (846-855).
  - 10) Lillsand T. M. and Kiefer R. W., 1994: Remote Sensing and Image Interpretation., 3rd Edition. John Wiley and Sons.
  - 11) Mather P. M., Tso B. And Koch M., 1998: An Evaluation of Landsat TM Spectral data and SAR- Derived Textural Information for Lithological Discrimination in the Red Sea Hills, Sudan, INT. J. Remote Sensing, Vol. 19, No. 4, pp(587-607).
  - 12) Sarle w, s., 1999:" Artificial Neural Networks and their Biological Motivation, internet EXPLORER".
  - 13) Kohonen T., Honkela T., 2007: "Kohonen Network" Scholarpedia, 2(1):1568.
  - 14) Wilkinson G. G., Fierens F. and Kanellopoulos I., 1995b: "Integration of Neural and Statistical Approaches in Spatial Data Classification", Geographical System, Wilkinson, G. G., Vol. 2, PP. (1-20).

2004

(15

.441

-