

(Lactuca sativa L.)

(2003/11/1 2003/7/26)

MS

NAA

$10^3 \times 21.1$ 10^{-4} E
 10^{-10} G
 $10^3 / 10^3 \times 8.8$

$10^3 / 10^3 \times 17.0$ $10^3 /$
 10^{-4} F $10^3 / 10^3 \times 11.7$

(6)

NAA

(%63)

%47-18

Labrotary Prepared Trizoles Derivatives Used Instead of Standard Cytokinin in the Initiation and Growth of Single Cells and Suspension Culture of Lettuce Plant (*Lactuca sativa L.*)

Jamela H. Al-Bayati

Abdul Mutalib S. Mohammad

Department of Biology

College of Science

Mosul University

ABSTRACT

It was found that different derivatives from Triazoles produced locally can be used instead of the imported cytokinins in the medium for initiation of cell suspension and single cell of lettuce plant.

Addition of NAA to MS media containing the triazoles derivative enhanced greatly the initiation of cell suspension and division better than the effect of standard growth regulators. Moreover, these compounds sustain the cell division in the systems used. The density of the cells in the suspension medium reached 21.1×10^3 cell/cm³ in the presence of compound E, 17.0×10^3 cell/cm³ with compound G and 11.1×10^3 cell/cm³ with compound F in contrast with 8.8×10^3 cell/cm³ in the standard medium after 6 days of growth.

The results indicate that addition of these compounds increased greatly the viability of the single cell system in the same way as in the case of the standard medium. Addition of these compounds instead of standard cytokinins with NAA stimulates the growth of the cells grown on Agar-Drop system with the formation of callus with the lapse of growth period. The initiation of callus by this method was between 18 to 47 % as compared with 63% in the standard medium.

It can be concluded that these prepared compounds can be used as a new growth regulators instead of the standard cytokinins. These compounds can be used in the other tissue culture system for different plants.

.(1995)

.(Dixon, 1985)

.....

(Williams and Collin, 1976)

.(1990)

(Murashige ,1974)

.(Al-Atabee and Power, 1987)

- 4,2

()

(2,4-D)

.(1981)

(Mohammad and Hassan, 1988a,1988b)

(Sulfanilamide)

.(2000

2000

2001

)

.(2002

2000

)

Alexieva,et al., 1994)

.(Sankhla,et al., 1994,

1999

Noori

.(Mohammad and Abood, 1989)

(2002)

(single cell culture)

(Lactuca sativa L.)

(95 %)

 25 ± 2

(.Arnon and Haogland, 1944 2000)

0.5

(Murashige and Skoog, 1962) MS (Mohammad and Abood, 1989)

 $.4 \times 10^{-6}$ BA 3×10^{-4} NAA 10^{-4}

BA

NAA

 10^{-10} 10^{-8} 10^{-6}

:

-1,2,4

1999 Norri

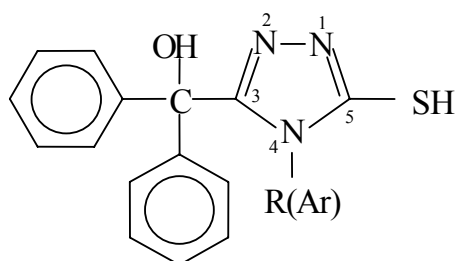
(SH)

(phenyl)

(4)

(1)

.(1)



:1

.....

:1

M.P.C	M. W.	R (Ar) (4)		
279-280	297	(CH ₃)	Methyl	A
237-8	287	(CH ₃ CH ₂ C ₆ H ₄)	4-Ethyl phenyl	B
225-6	311	(CH ₂ CH ₃)	Ethyl	C
196-7	323	(CH=CH ₂ -CH ₃)	Allyl	D
240-1	298	(NH ₂)	Amino	E
210-211	293	(CL-C ₆ H ₄)	4-chloro phenyl	F
216-7	259	(C ₆ H ₅)	Phenyl	G

:

(Morris and Fowler, 1981) Morris Fowler

21

1

(Gamborg *et al.*, 1968) B5

³ 50

³ 250

4x10⁻⁶

BA

3x10⁻⁶

NAA

MS

³ 50

³ 250

4x10⁻⁶

BA

3x10⁻⁶

NAA

3x10⁻⁶

NAA

()

Shaking

° 2±25

New Brunswick USA

incubator

24

150

(Gresshoff, 1980; Rper, 1979)

4

46 µm

(Plant Genet. Manipulation, Group, Nott. Univ. UK)

72 48 24

³ 100

Log phase

:

(Dixon, 1985)

:

$100 \text{ } ^3$ (Fluka UK) $20 \text{ } ^3 / 1$ $120 \text{ } ^\circ$

$40 \text{ } ^\circ$

:

NAA

()

3×10^{-6}

(2)

:

$40 \text{ } ^\circ$

$1 \text{ } ^3$

$10 \text{ } ^8$

5cm

$3 \text{ } ^3$

MS

$3 \text{ } ^3$

3×10^{-6}

NýAA

MS

(1)

(Dixon, 1985)

:2

NAA

() NAA	()	
3×10^{-6}	10^{-8}	A
3×10^{-6}	10^{-10}	B
3×10^{-6}	10^{-6}	C
3×10^{-6}	10^{-6}	D
3×10^{-6}	10^{-4}	E
3×10^{-6}	10^{-4}	F
3×10^{-6}	10^{-10}	G

216

.....

16

800-700

° 25

8

3

21

B5 MS

B5

BA NAA

MS

MS

MS

4×10^{-6}

BA

3×10^{-6}

NAA

(1 2) 72

$\cdot^3 / 10^3 \times 8.8$

MS

:

D

(2) 3×10^{-6} NAA (BA) MS

:A

NAA 10^{-8} MS A
 $^3 / 10^3 \times 8.2$.
 $^3 / 10^3 \times 6.5$ (3×10^{-6})
24
(%70)
 $^3 / 10^3 \times 9.7$
.(a, 2)

:B

10^{-10} B
.%10 24
 $10^3 \times 7.6$

.(b ,2)

:G

10^{-10} g
(g ,2)
 10^{-4} E
:

.(1)

3×10^{-6} NAA

.....

:

5

30

.%80

. 45

.(3) %63

. 60

.(1,1)

MS

:3

60

(%)	()		*	
0	60	0	35	MS
63	60	22	35	MS

. / 10-8

:

.(1 d) D

58-43

.(4) %47-18

.(3)

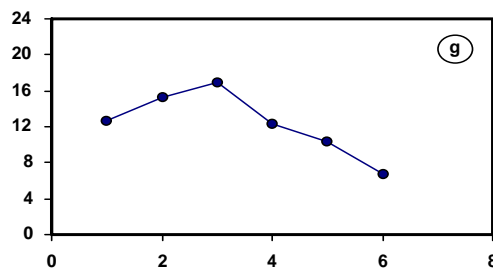
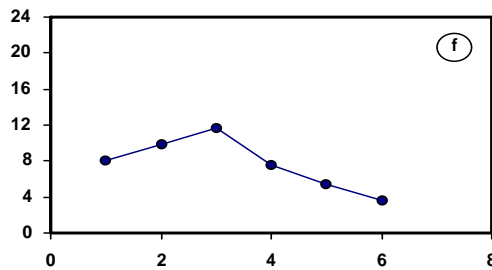
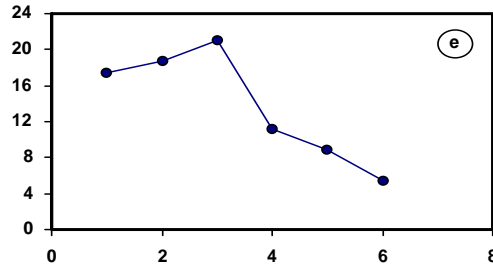
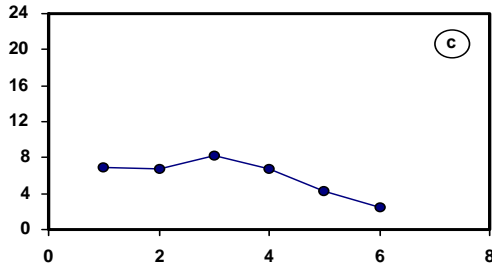
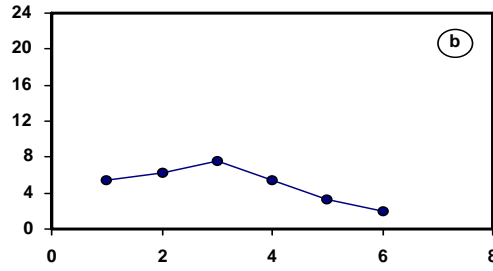
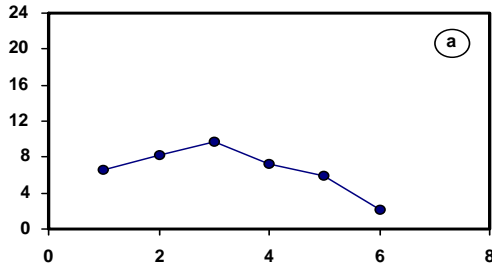
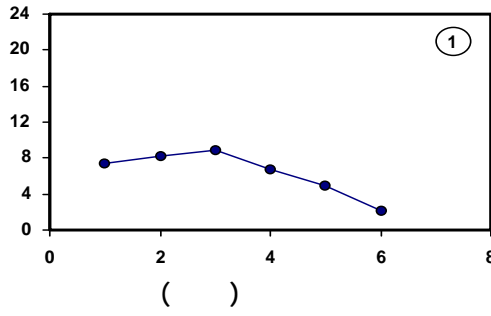
45

C B A

.(c b a 1)

G F E

.(g f e 1)



10³ ×

()

()

MS

:2

3x10⁻⁶

NAA

NAA

MS

(1) : (2)

MS

(a) . ()

4x10⁻⁶

BA

3x10⁻⁶

B

(a)

(b) . NAA

10⁻⁸

A

D

(d) .

10⁻⁶

C

(a)

(c) .

10⁻¹⁰

(a)

(f) .

10⁻⁴

E

(a)

(e) .

.

10⁻¹⁰

G

(a)

(g) .

10⁻⁴

F

.....

F

MS

()

MS

:4

60

(%)	()		*	
0	60	0	35	() MS
63	45	22	35	() MS
				MS
36	55	19	52	A
47	57	19	40	B
32	58	12	37	C
0	60	0	40	D
22	48	14	63	E
18	43	4	22	F
24	45	8	33	G

. / 10-8 *

()

)

.(1998 2000 2002

MS

:(1)

(BA NAA)

. 60

()

(1)

A

()

(a)

.BA

10^{-8}

10^{-10}

B

() a.

(b)

.BA

10^{-6}

C

() a.

(c)

.BA

.....

. 60 D (d)

10^{-4} E () a. (e)
. BA

10^{-4} F () a. (f)
.BA

10^{-10} G () a. (g)
.BA

(2002)

NAA

(Single cell culture)

Moore, 1979; Salisbury)

.(and Ross, 1992

.D

PBZ

(Steroles)

.(Yates et al., 1993)

NAA

.(Grossmann, 1992)

.(Grossmann, 1992)

(Davis and Curry, 1991)

()

.....

(genetic potentialities)

.(Wareing and Phillips, 1978)

.(Dodds and Robert, 1985)

$10^3 \times 21$

10^{-4} E

$10^3 \times$

10^{-10} G

$^3 / 10^3 \times 8.8$

$^3 /$

$^3 / 17.0$

(Dixon, 1985)

NAA

% 47-0

63 %

.(2000 2002)

.(Chandra and Soni, 1983)

NAA

10^{-4} F

NAA

Single cell)

(culture

()

.2002

.(*Lactuca sativa* L.)

.1995

.2000

.(*Lactuca sativa* L.)

(PDA)

.1998

.(*Lactuca sativa* L.)

.1981

.2001

.(*Raphanus sativus*

C

.2000

.36-15 1 11

.2000

10

.15-1 2

.1990

- Al-Atabee, J.S. and Power, J.B., 1987. Plant regeneration from protoplasts of *Dimorphotheca* and *Rudbeckia*. Plant Cell Repts., Vol.6, pp.414-416.
- Alexieva, V., Sergiev, I., Karanove, E., Golovinsky, E. Stanoeva, E., Haimove, M. and Petrov, G., 1994. Anticytokinin activity of 4-substituted Triazole [4,5-d] pyrimidines and 4-substituted pyrazolo [3,4-d] pyrimidines. J. Plant Growth Regual., Vol.13, pp.123-129.
- Arnon, D.I. and Hoagland, D.R., 1944. The investigation of plant nutrition by artificial culture methods. Bio. Rev., Vol.19, pp.55-67.
- Chandra, N. and Soni, J.R., 1983. Differentiation in callus and suspension cultures of carrot (*Daucus carota*) and fennel (*Foeniculum vulgare*). Advancing frontiers plant sciences, Proceedings National Symposium on Advancing Frontiers of Plant Sciences, Jodhpur, India., p.134-135.
- Davis, T.D. and Curry, E.A., 1991. Chemical regulation of vegetative growth. Crit. Rev. Plant Sci., Vol.10, pp.151-188.
- Dixon, R.A., 1985. Plant Cell Culture, A practical approach. IRL PRESS, Oxford. Washington DC.
- Dodds, J.H. and Roberts, L.W., 1985. Experiments in Plant Tissue Cultures. Cambridge University Press, UK.
- Gamborg, O.L., Miller, R.A. and Ojima, K., 1968. Nutrient requirement of suspension culture of soybean root cells. Exp. Cell Res., Vol.50, pp.151-158.
- Gresshoff, P.M., 1980. In vitro culture of white clover: callus, suspension, protoplasts culture, and plant regeneration. Bot. Gaz., Vol.141, pp.157-164.
- Grossmann, K., 1992. Plant growth relatedants. Their Mode of Action and Benefit for Physiological Research. p.788-797. In: Karssen C.M., Van Loon, L.C. and Vreugdenhil, D. (eds.). Progress in Plant Growth Regulation, Kluwer Academic Publ. Netherlands.
- Mohammad, A.M.S. and Abood, S.A., 1989. Propagation of lettuce (*Lactuca sativa* L.c.v. longiflora) by tissue culture. E. ESCWA, ID, 89 Conf. 1110.

- Mohammad, A.M.S. and Hassan, H.A., 1988a. Effect of some standard and prospective growth regulator on sunflower callus. I. Initiation and growth. J. Univ. Kuwait (Sci.), Vol.15, pp.69-77.
- Mohammad, A.M.S. and Hassan, H.A., 1988b. Effect of some standard and prospective growth regulators on sunflower callus. II. Changes in protein. RNA. DNA and carbohydrate content. J. Univ. Kuwait (Sci.), Vol.15, pp.281-290.
- Moore, T.C., 1979. Physiology and Biochemistry of Plant Hormones. Academic Press, New York.
- Morris, P. and Fowler, M.W., 1981. A new method for the production of fine plant cell suspension culture. Plant Cell Tiss. and Org. Cult., Vol.1, pp.15-24.
- Murashige, T., 1974. Plant propagation through tissue culture. Ann. Rev. Plant Physiol., Vol.25, pp.135-166.
- Murashige, T. and Skoog, F., 1962. A revised medium for rapid growth and bio-assays with tobacco cultures. Physiol. Plant., Vol.15, pp.473-479.
- Noori, M.S., 1999. Synthetic studies of some new polyfunctional substituted five and six member heterocyclic compounds. Ph.D. Thesis, University of Mosul, Mosul-Iraq.
- Rper, W., 1979. Growth and cytology of callus and cell suspension cultures of *Vicia faba*. Z. Pflanzenphysiol., Vol.93, pp.245-257.
- Salisbury, F.B. and Ross, C.W., 1992. "Plant Physiology". 4th ed. Wadsworth Publishing Company, Belmont, California. Advision of Wads Worth, Inc.
- Sankhla, D., Davis, T.D., Sankhla, N. and Upadhyaya, A., 1994. In vitro production of flowering shoots in German Red cornation: Effect of uniconazole and gibbererlic acid. Plant Cell Rep., Vol.13, pp.514-518.
- Wareing, P.F. and Phillips, I.D.J., 1978. The control of growth and differentiation of plant. 2nd Ed. Pergamon Press. Oxford.
- Williams, L. and Collin, H.A., 1976. Growth and cytology of celery plant derived from tissue cultures. Ann. Bot., Vol.40, pp.333-338.
- Yates, P.J., Lenton, J.R. and Good, L.J., 1993. Effects of triazole inhibitors of sterol biosynthesis on the free and esterified sterol composition of celery cell suspension culture. Pesticide Sci., Vol.39, pp.257-265.