

Culex (Culex)

-

(Culicidae: Diptera)

(2010 / 11 / 8 2010 / 10 / 3)

2811 *Culex* spp

Culex Culex pipines, Culex Culex

(CO₂)

Culex Culex laticinctus, Culex Culex perexiguus, Culex Culex antennatus, thieleri.

Mesepimeron , Prealar knob, Mesokatepisternum , *Culex* spp. :

Classification key

Classification Key to Species of *Culex* (*Culex*) (Diptera: Culicidae) in the North of Aleppo - Syria

Mohamed Abiad Yahia Assany Durriah B. Arjoon

Department of Animal Life Science

Faculty of Science

Aleppo University

ABSTRACT

The study was conducted in the north of Aleppo / Syria, and several sites for the development of key classification of the types of normal *Culex* spp, a total 2811 were collected by light traps with CO₂, it were recorded five species which belong to genus *Culex*: *Culex Culex pipiens*, *Culex Culex antennatus*, *Culex Culex laticinctus*, *Culex Culex perexiguus*, *Culex Culex thieleri*.

It had excerpted Classification key to the species of *Culex* in the north of Aleppo- Syria based on taxonomic characters of the body morphology and male genitalia.

Keywords: *Culex* spp. Mesokatepisternum, Mesepimeron, Prealar knob, Classification key.

Culicidae *Culex* spp
Gabriel *et al.*, 2008; Gabriel *et al.*,)
.(2009
Culex 25 751
34
Culex spp.

.....

()

Culex spp.

Culex spp.

Culx

spp.

(36° 27' 51.84" _36° 11' 90.6")

449_ 222

(37 °01' 33.6" _36° 51' 37 .44")

New Jersey-trap

CDC_ trap

()

: Scope

5X-10X-20X-25X- :

. (Knight, 1970 ; Harbach, 1985; Huang, 2001) :

Culex

Sensillae

15

Plumose

.Pilose

Piercing sucking

Sucking

.(Harbach, 1988; Crisp *et al.*, 2002)

(*)

Setae

(*)

(C)

:

(*) Veins

(M-M₁₊₂-M₁-M₂-M₃₊₄)

(R-R₁-R_s-R₂₊₃-R₂-R₃-R₄₊₅)

(Sc)

rm-mcu

(1A)

CuA-CuP

(*) Spots

Halters

(*)

(*)

(*)Scutum

Alinotum

Mesothorax

Scutoscutellar suture

Scutellum

(*)Postspiracular area

Plural suture

(*)Mesepimeron

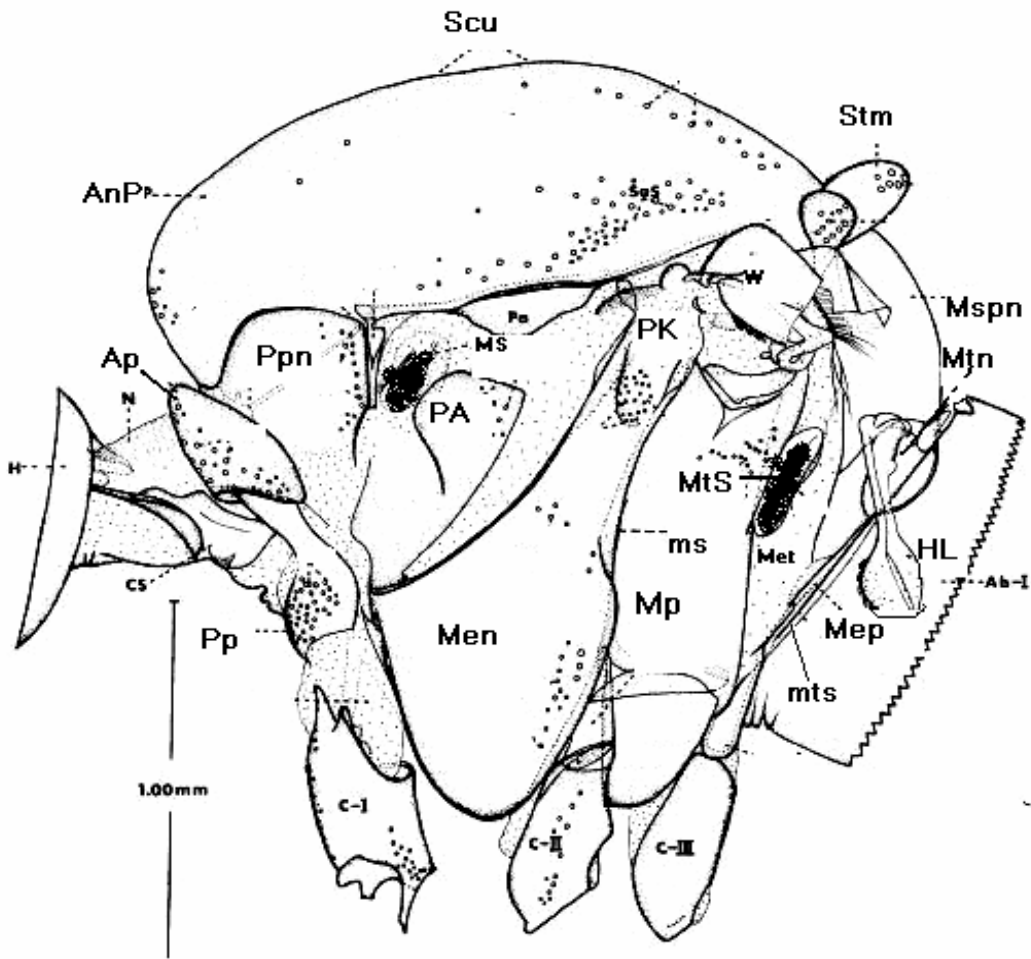
Mesepisternum

Mesepisternum

(*)Prealar knob

(Abdel-Malek, 1960 ; Huang, 2001; Crisp *et al.*, 2002) .

.(1)



: 1

: 1

	N	Neck
	H	Head
	CS	Cervical Sclerite
	AnP	Anterior pronotum
	AP	Antepronotum
	Ppn	Postpronotum
	Pp	Propleuron
	C	Coxa

	W	Wing
Mesoalinetum	Scu	Scutm
	Stm	Scutellum
	Mspn	MesoPostnotum
	Ms	Mesopleural suture
	Men	Mesepisternum
	Mp	Mesepimeron
	PK	Prealar knob
	MS	Mesothoracic spiracle
	PA	Postspiracular area
	Mtn	Metanotum
	Mts	Metapleural suture
	Met	Metaepisternum
	Mep	Metepimeron
	MtS	Metathoracic spiracle
	Hl	Halter

Abdomen

Sheath

Laffoon, Jardine, 1990) (*) Genitalia

(1971:

.....

(2) : (Male Genitalia)

°180

Phallus

Genitalia

Hyponderum : Eypinderum, Hyponderum

-

Eypinderum

: Gonocoxites

-

Subapical lobe (*)

Culex

(*) Clasper

a- b-c-d-e-f-(*)g-h :

: Gonostylus

-

(*)

. Gonostylar claw

: Phallus

. Mesosome

Aedeagus

Phallosome

Abdomen of

Paramere

. Phallosome

*

Paramer

(*)

(*)

: Mesosome Aedeagus *

Lateral Aedeagal plates

Ventral aedeagal bridge Dorsal aedeagal bridge .

Culex

(*) Inner division

Outer division

(*)

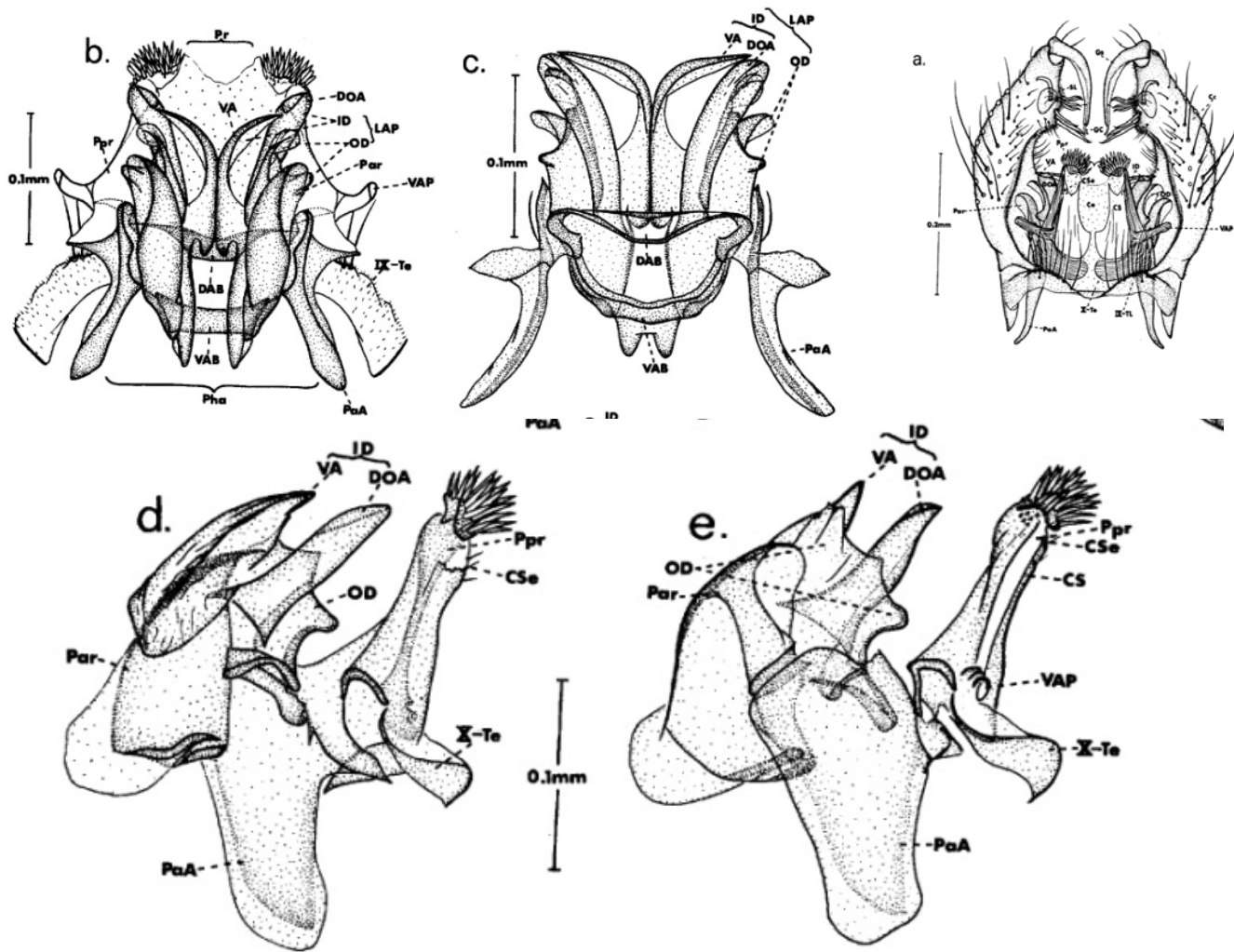
Lateral arms

(*)

Dorsal arms

Ventral arms

(Laffoon, 1971; Jardine, 1990)



Culex pipiens

: 2

.Phallus

-b

-a

Phallus

-d .Phallus

-c

.Phallus

- e

.....

: 2

	Gc	Gonocoxite
	SL	Subapical lobe
	Gs	Gonostylus
	Pha	Phallosome
	PaA	Abdomen of Paramer
	Par	Paramer
	Ae	Aedeagus
	LAP	Lateral Aedeagal plates
	DAB	Dorsal Aedeagal Bridge
	VAB	Ventral aedeagal bridge
	ID	Inner division
	OD	Outer division
	LA	Lateral arm
	VA	Ventral arm
	DOA	Dorsal arm

Culex

(3) : *Culex*

) Mesepimeron (1) Seta - 1

(

2.....

Mesepimeron Seta - * 1

Culex

Mesepimeron 3 - (1) 2

Prealar knob

.....

Lutzia
- * 2

4-1 Meseperimeron

4-3

Prealar knob

3.....Meseperimeron

()

-(* 2) 3

... 0.85

Barraudius

.....

- * 3

0.85

4.....

-(* 3) 4

)

Antennatus

Culex

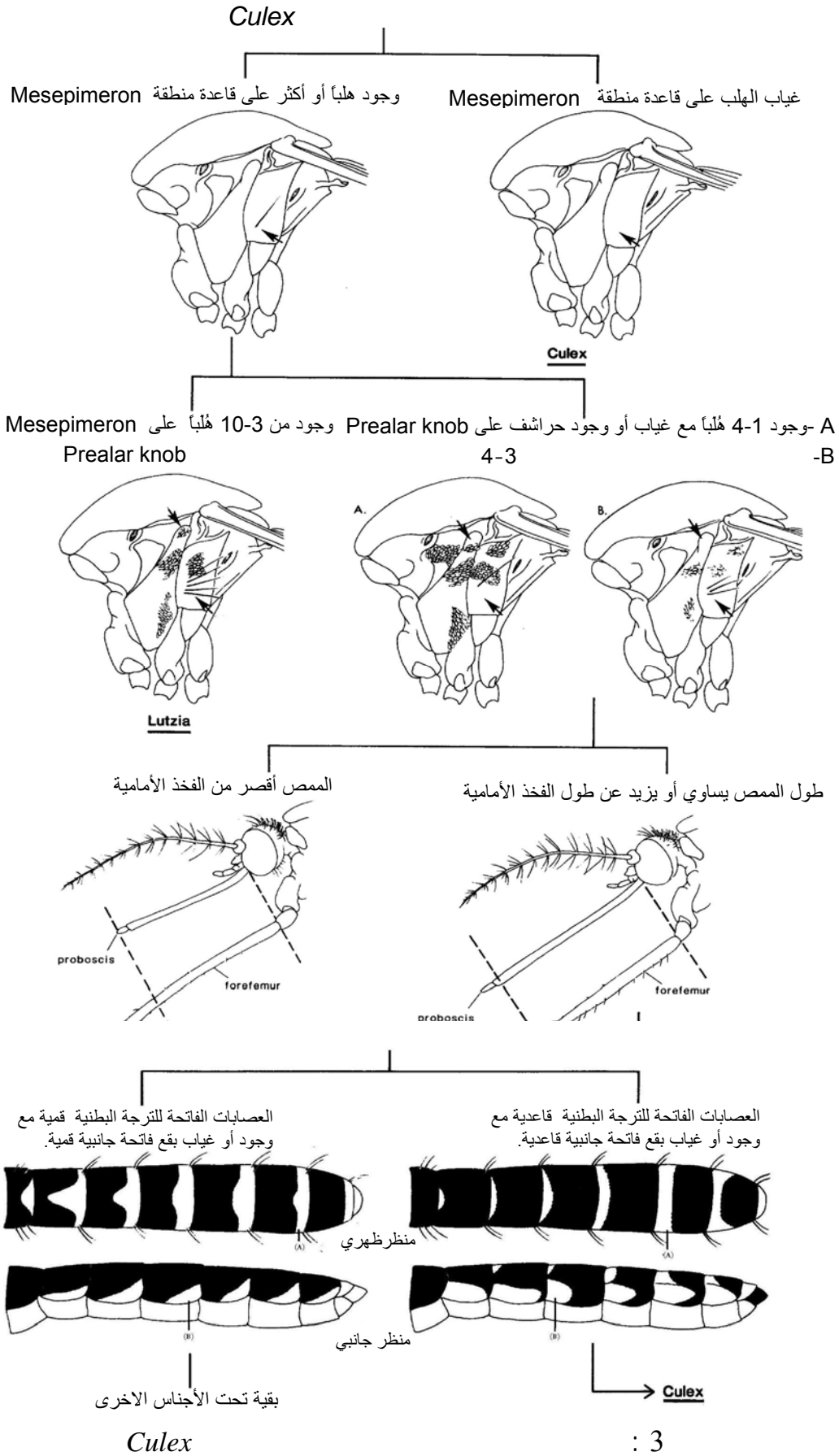
.....

- * 4

.....

.

.....



(4) : *Culex Culex spp.*

-1

Prealar knob

Postspiracular area

2.....

3.....Postspiracular area

- * 1

-(1) 2

Mesokatepisternum

Prealar knob

5.....

)

- * 2

(

Prealar knob

Mesokatepisternum

6

-(* 1) 3

7.....

- * 3

4.....

)

4 1

Mesepimeron

-(* 3) 4

(

Costa

8

Mesepimeron

- * 4

9.....

Seta g

Subapical lobe :

-5

Dorsal arm

Ventral arm

5-2

Lateral arm

.

.....

5

Paraproct

(-5) *C.thieleri*

Seta g Subapical lobe : -6

Dorsal arm

Lateral arm

Ventral

arm

Paraproct

(6) *C. perexiguus*

Seta g Subapical lobe : -7

Dorsal arm

Ventral arm

Ventral arm

5-3

Lateral arm

5

Paraproct ,

(-5) *C. antennatus*.....

Seta g Subapical lobe : -8

Dorsal arm

Ventral arm

Lateral arm ,

thieleri

Paraproct 4 3-7

(-5) *C. laticinctus*.....

Seta g Subapical lobe : -9

Dorsal ,

arm

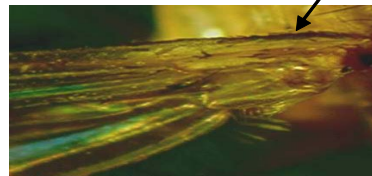
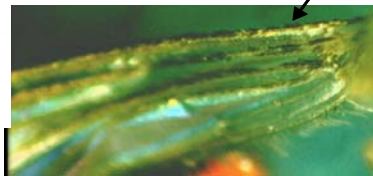
Ventral arm

Lateral arm

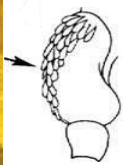
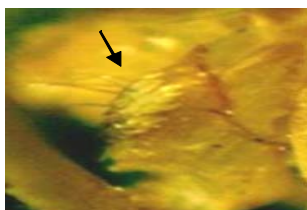
Paraproct

(6) *C. pipiens*.....

Postspiracular



Cx. anetnatus

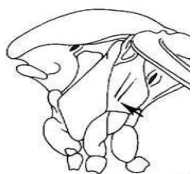


Mesepimeron

2-4



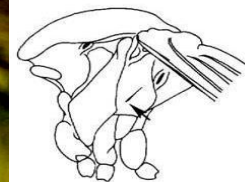
Mesepimeron



Cx. laticinctus

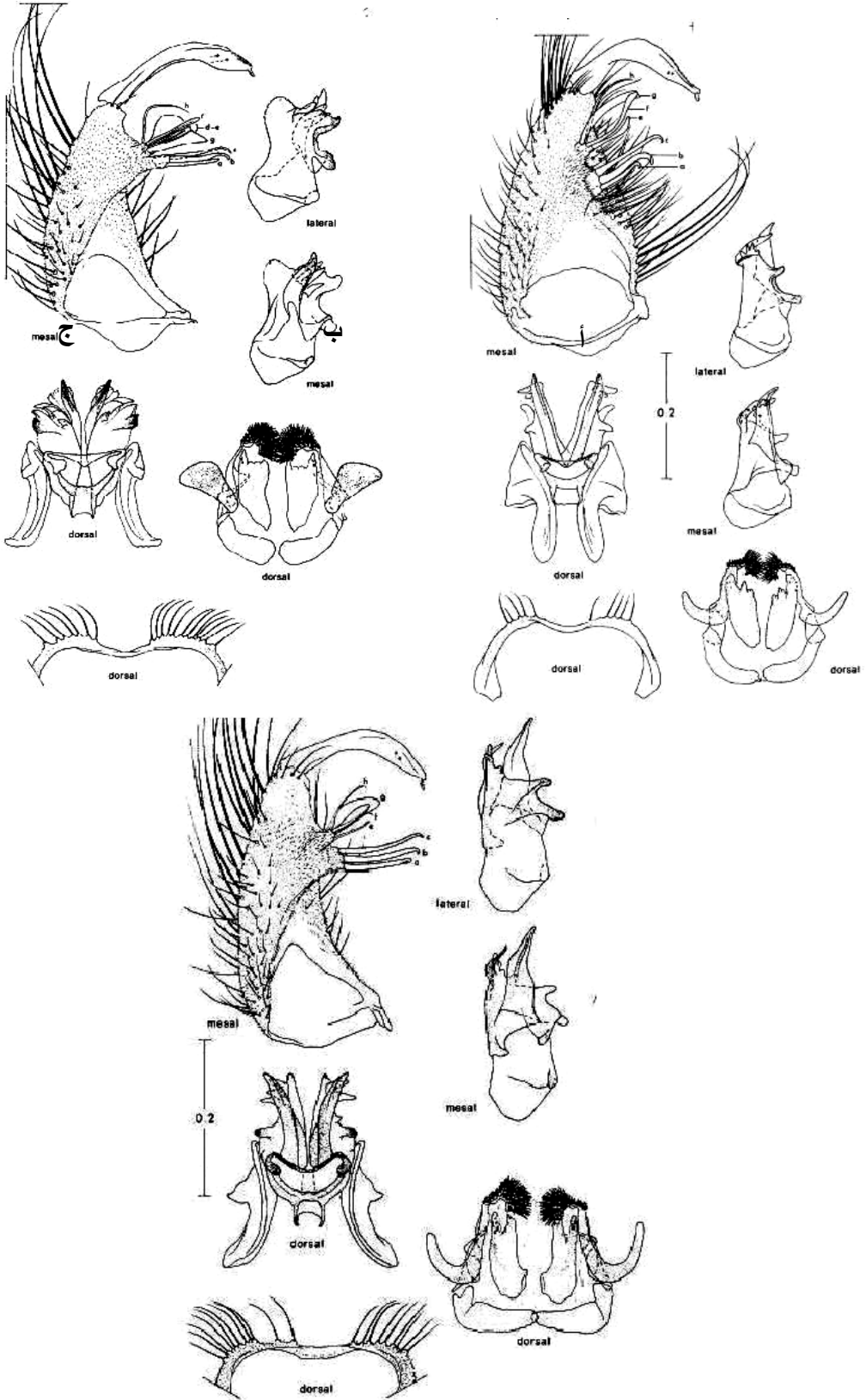


Cx. pipiens

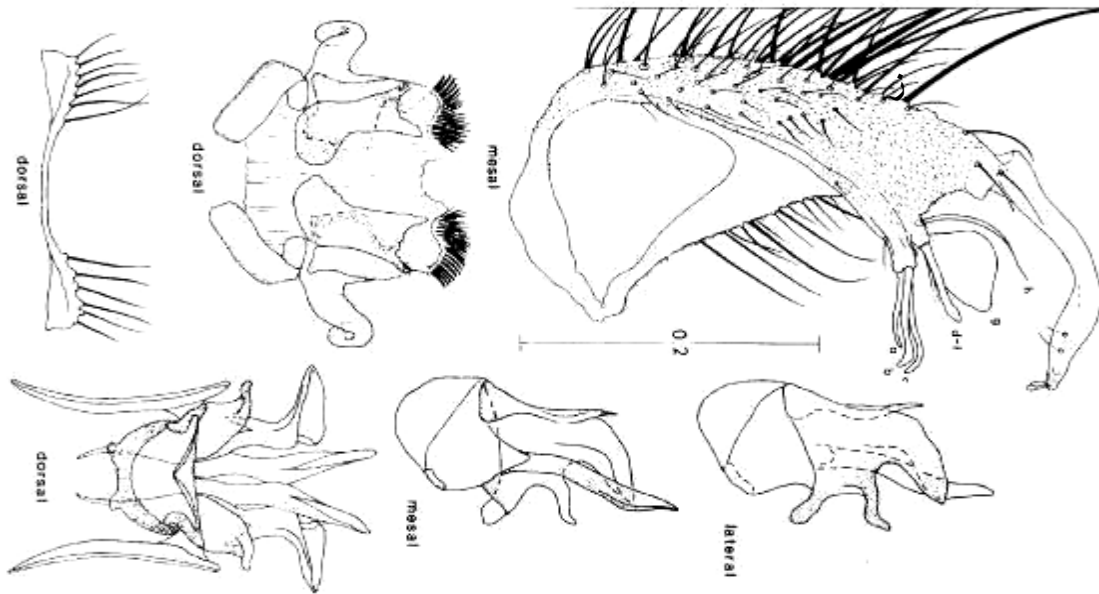
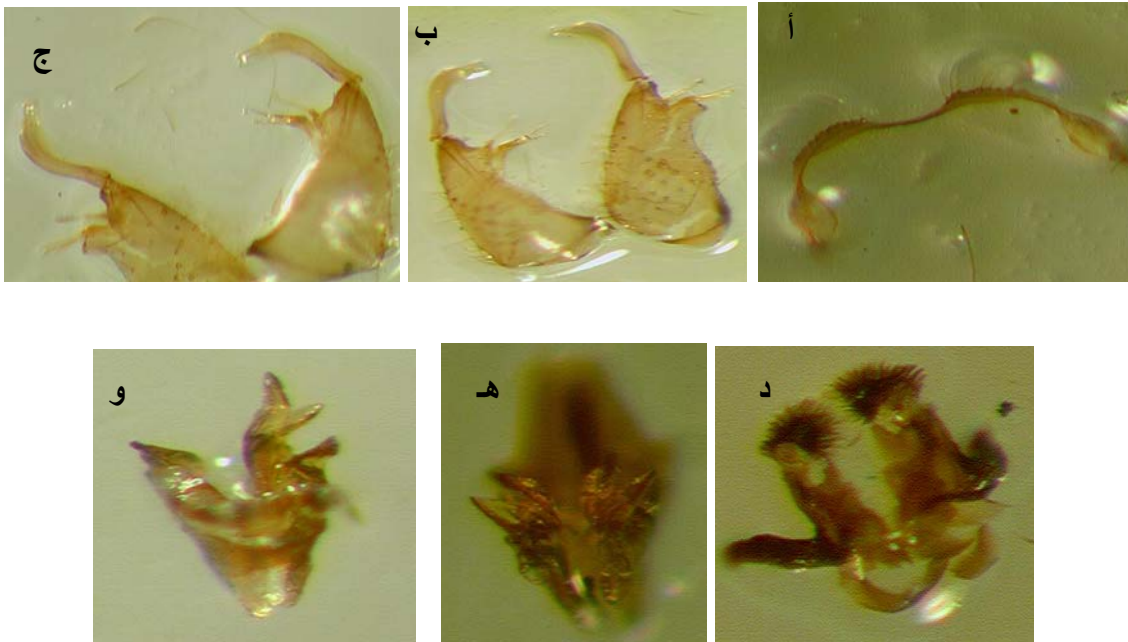


Culex

: 4



C. antennatus - *C. theileri* -) : : 5
 (*C. laticinctus* -

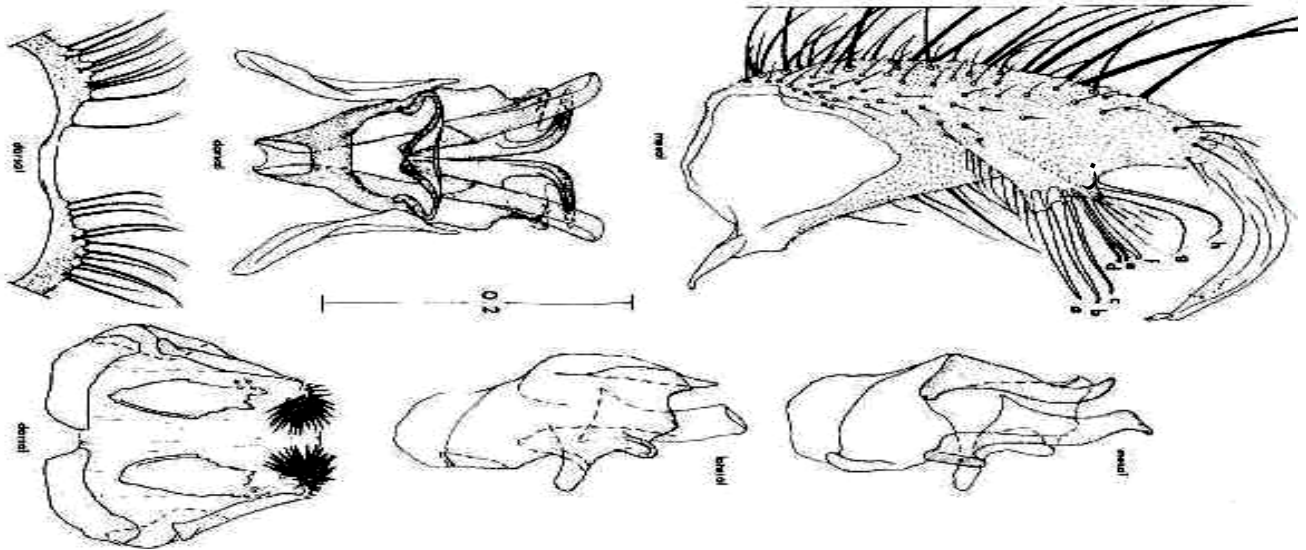
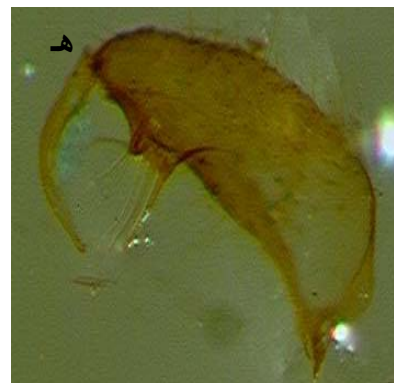
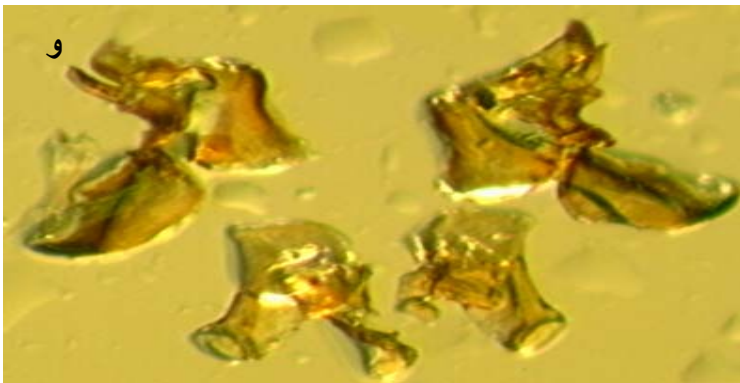


C. perexiguus

: 6

- | | | | | |
|---|-------------|---|-------------|---|
| - | Gonocoxites | - | Eypinderum | - |
| - | Proctiger | - | Gonocoxites | - |
| - | Phallus | - | Phallus | - |

.....



C. pipiens : 7

Gonocoxites

Phallus

Phallus

Phallus

- Abdel-malek, A. A. (1960). The culicine mosquitoes of the northern region of the united arab republic (Diptera : Culicidae), **Xliv**, 111-142.
- Crisp, S.; Crisp, N.; Halstead, S.; Hughes, B.; Knepper, R.; Kight, M.; Lechel, W. (2002). "Michigan Mosquito Manual". University of Michigan, MMCA ed, Michigan, 109 p.
- Gabriel, L.; Hamer, U. D.; Jeffrey, D. B.; Scott, R. L.; Marilyn, O. R.; Tony, L. G.; Edward, D. W.(2008). *Culex pipiens* (Diptera: Culicidae): A bridge Vector of West Nile Virus to Humans. *J. Med. Entomol.* **45**, 125-128.
- Gabriel, L. H.; Uriel, D.; Kitron, T. L.; Goldberg , J. D. ; Brawn, S. R. L.; Marilyn, O. R.; Daniel, B. H.; Edward, D. W. (2009). Host selection by *Culex pipiens* Mosquitoes and West Nile Virus Amplification. *Am. J. Trop. Med. Hyg.*, **80** , 268–278.
- Harbach, R. E. (1985). Pictorial keys to the genera of mosquitoes, subgenera of *Culex* and the species of *Culex* (*Culex*) occurring in southwestern Asia and Egypt, with a note on the subgeneric placement of *Culex deserticola* (Diptera: Culicidae)'. *Mosquito Systematics*, **17**(2), 83-107.
- Harbach, R. E. (1988). The mosquitoes of the subgenus *Culex* in southwestern asia and egypt (Diptera: Culicidae). American Entomological Institute, **7**, 246.
- Huang, Y. M. (2001). A pictorial key for the identification of the subfamilies of culicidae, genera of culicinae, and subgenera of aedes mosquitoes of the afrotropical region(diptera: culicidae).*Proc. Entomol.Soc*, **103**(1), 1-53.
- Jardine, N. K (1990). The dictionary of entomology. Ashford, 1st, London, 280 p.
- Knight, K. L. (1970). A mosquito taxonomic glossary i. adult head (external). *Mosquito Systematics*, **2**(1),23-33.
- Laffoon, L. J. ; Knight, K. L. (1971). A mosquito taxonomic glossary v. abdomen (except female genitalia). *Mosquito Systematics*, **3**(1), 8-24.