



Contents lists available at <http://qu.edu.iq>

Al-Qadisiyah Journal for Engineering Sciences

Journal homepage: <https://qjes.qu.edu.iq>



The effect of using scrap tire powder in the perforated brick holes on thermal insulation

Husam Jasim Farhood and Alaa Liaq Hashem*

Department of Mechanical Engineering, College of Engineering, University of Al Qadisiyah, Ad-Diwaniyah, Iraq.

ARTICLE INFO

Article history:

Received 05 December 2020

Received in revised form 30 January 2021

Accepted 15 April 2021

Keywords:

Scrap tire powder
Traditional wall
Insulation
Decrement factor

ABSTRACT

In this study, old scrap tire powder was used with building materials commonly used in Iraq, where it was used in some brick holes in the form of powder 0-1 mm, and in this case, it was called scrap tire powder in bricks [STP-I]. It was compared with the traditional wall that does not contain scrap tires [STs], which we called No STs. The comparison was by placing a heating source for 8 hours on each wall separately after building it inside a test room prepared for this purpose and by measuring the temperatures on the inner and outer surface and the center of the wall, as well as comparing the thermal resistance and the heat transferred, where we note that the addition of this material may be Reducing the internal surface temperature by 2.56°C, which is a good incentive for this material's role as a thermal insulator.

© 2021 University of Al-Qadisiyah. All rights reserved.

1. Introduction

Scrap tires (STs) represent environmental contamination and a public health concern because they can easily become mosquito-breeding sites or can harbor other disease-borne pests[1]. Iraq seeks to recycle millions of tires, unrecognized waste disposal, in general, increases health risks, and lack of economic benefits..., Iraq imports 10 million tires from various countries annually[2], according to the statistics of the Iraqi Ministry of Planning to Supply more than 6 million cars, and then they are later thrown into squares and public roads most of it is burned for disposal without approval from the municipal authorities, and far from environmental controls. In Iraq, the residential sector accounts for over 46% of total energy consumption[3]; most of this energy is consumed by air conditioning. The use of thermal insulation to reduce energy consumption in residential buildings is not a common practice.

When insulation is used, traditional materials with low thermal conductivity, such as polystyrene, are common[4]. The development of new insulation materials is an opportunity, as there are several disadvantages associated with the use of polystyrene, such as poor mechanical resistance, solar degradation, and high cost. There are therefore two indirect problems: high energy consumption due to poor insulation of buildings and misuse of land for ST landfills. These problems can be resolved at the same time if the number of STs disposed of is reduced by using them as insulation material in residential buildings and other applications. Building sustainability is the main goal that researchers seek in their research, as a lot of research has dealt with this topic for the purpose of achieving the necessary recommendations that would raise the level of practical reality in building design[5]. It was found through this research that the process of

* Corresponding author.

E-mail address: husamjasim037@gmail.com (Husam Farhood)



Nomenclature			
k	thermal conductivity ($W m^{-1} K^{-1}$)	T-Z T-E	temperature of test zone(°C) temperature of external surface(°C)
$q_{cond.}$	Heat conduction ($W m^{-2}$)	T-I	temperature of internal surface(°C)
R	thermal resistance ($m^2 k /W$)	$(T-I)^{Max}$	Max. temperature of internal surface(°C)
$R_{(No STs)}$	thermal resistance of wall without scrap tire powder ($m^2 k /W$)	$(T-I)^{Min}$	Min. temperature of internal surface(°C)
$R_{(STP-I)}$	thermal resistance of wall with scrap tire powder ($m^2 k /W$)	$(T-E)^{Max}$	Max. temperature of external surface(°C)
T-M	temperature of middle wall	$(T-E)^{Min}$	Min. temperature of external surface(°C)
T-L	temperature of laboratory(°C)	∅	air volume fraction

sustainability in buildings is achieved by many mechanisms, foremost of which is reducing . The cost of electrical energy by reducing consumption As we know that most of the electrical energy spent in the building It is for the purposes of cooling and heating, and by reducing the electric power, there is less money spent in this aspect, which is often very expensive, as well as the process of reducing energy consumption, which in turn leads to a reduction in gas emissions from power plants[6]. Some applications of ST have been previously reported. For instance, Yesilata et al[7], Reported that ST scrap tires may be mixed with concrete for use as construction material in exterior walls in order to increase thermal protection . The use of scrap rubber tires (STs) as insulation gives additional features, such as reducing storage space in landfills, in addition to reducing environmental damage and the risk of combustion. Ashraf Fadiel et al [8]showed that with the increase in the volume of added rubber, the thermal conductivity decreases, as the rubber mortar that contains 40% rubber is 0.492 watts / meter. Kelvin, meaning there is a decrease of 28% for conventional mortar. M. Romero et al[9]they experimental studied thermal performance of scrap tire blocks as roof insulator in residential building roofs . They used rubber blocks with dimensions of 30 cm * 30 cm * 2.54 cm thickness and in both white and black colors. They were placed both on the roof of concrete buildings and studied the thermal performance and the effect of their presence on the temperature inside the room.

In addition to studying the surface without block, but in white color from the facing side to the source of manufactured radiation, which simulates solar radiation. The results showed that scrap tire blocks (STBs) had thermal conductivity more than polystyrene but, the ability of STBs to maintain the interior temperature was nearly similar because of the conduction –convection heat transfer mechanism inside STBs. Also they showed that STBs-white was performed better as insulating material. (STBs had Rapid loss of heat gain as well as slow gain of thermal energy). This is a good indication of the role of scrap tire blocks in thermal insulation. Researchers' recommendations included a number of opinions on reducing energy consumption, the most important of which was the use of insulators in the outer walls, which would create a comfortable environment for occupants while reducing energy bills. In addition, the STs presented certain positive characteristics, such as moisture resistance, mildew, heat, humidity, ultraviolet rays (from the sun), acids, and other chemicals. In addition, STs show a delay in the development of bacteria. In this study, the focus will be on the efficiency of using scrip tire rubber produced by the tire factory in Al-Diwaniyah (powder 0-1mm) and recycled from used tires in the holes of the brick units used in the construction of the walls and its effect on the thermal insulation in the building.

2. Materials and methods

2.1 Materials

Building materials available in the Iraqi market, perforated bricks with dimensions of 8 cm * 12 cm * 24 cm, cement, and sand. The rubber (powder 0-1mm) made from old tire scrap and prepared in Al Diwaniyah Tire Factory /ABRAJ Al KUT company. Powder rubber tire scrap was used in perforated brick holes and a certificate of examination of conformity to the European standard EN1177 and as well as perforated bricks and mortar.

For two models, the temperature readings for each model are taken by placing the temperature sensors on the outer and inner side of the wall and in the middle of the wall, and by completing the readings, a comparison was made with the results achieved to find out the effect of using scrap tire powder in brick holes.

2.2 Thermal conductivity measurements

2.2.1 Thermal conductivity for structural materials

In this study, Thermal conductivity and some other characteristics of structural materials used in building walls, such as perforated bricks and mortar, are according to the details in the table below. Table 1.

Table 1. Thermo-physical characteristics of the layers of the wall[10],[11]

material	Thickness (m)	Density (kg m ⁻³)	C (Wm ⁻² k ⁻¹)	K (w m ⁻¹ k ⁻¹)
External cement mortar	0.02	2050	-	1.08
Perforated bricks	0.24	1880	1.37	0.66
Perforated bricks	0.12	1880	2.78	0.66
Internal cement mortar	0.02	2050	-	1.08

2.2.2 Thermal conductivity for scrap tire powder

Tire scrap powder takes the shape of the space it contains, when it is placed inside the perforated bricks, it takes the cylindrical shape that contains between its particles the air as show in Fig. (1B).

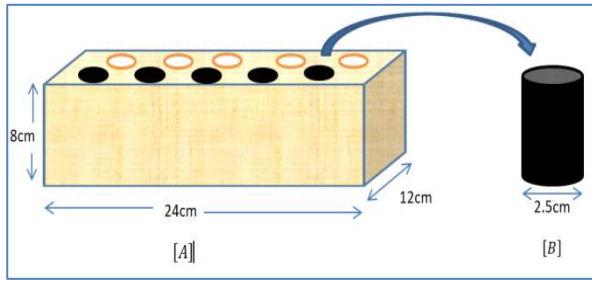


Figure 1. It shows how to fill the perforated bricks with scrap tire powder.

Therefore, the calculation of the thermal conductivity of scrap tire powder with air in a cylindrical form first, and rubber and air cylinders with bricks second we use the equations listed below to calculate the conductivity of the scrap tire powder;[5]:

$$K = k_1(1 - \phi) + k_2(\phi) \quad (1)$$

Where k_1 is the estimated thermal conductivity for bricks and k_2 the thermal conductivities of scrap tires powder (STP) with air in cylindrical shape, respectively, and ϕ Porosity to powder cylinder scrap tire. to find ϕ , we measure the weight of the rubber placed in a cylindrical shape, which is equal to 15 grams and the density of 430 kg/m³ [12] find the volume of rubber in hole:

$$v_{rubber} = \frac{m_{rubber}}{\rho_{rubber}} \quad (2)$$

The volume of air in a single hole in the brick is equal to the volume of one hole minus the volume of rubber in one hole.

$$v_{air} = v_{hole} - v_{rubber} \quad (3)$$

$$\phi = v_{air} / v_{hole} \quad (4)$$

We substitute the porosity value ϕ into equation (5) to find the thermal conductivity value of the rubber cylinder and the air:

$$k_{rubber \text{ and } air} = k_{rubber}(1 - \phi) + k_{air} \cdot \phi \quad (5)$$

In addition, when putting rubber in the holes of the bricks, it is necessary to find the thermal conductivity of this brick that contains rubber and air cylinders in its holes Therefore, equation (1) is reused. However, the value of ϕ is found by considering the five holes filled with rubber and air being the porous part of the brick, and finding the size of one hole multiplied by five is the number of holes.

$$V_{(rubber \text{ and } air)} = \left[\frac{\pi}{4} D^2 \times L \right] \times 5 \quad (6)$$

$$V_{brick} = L \times D \times H \quad (7)$$

To find new ϕ :

$$\phi = \frac{V_{(rubber \text{ and } air)}}{V_{Brick}} \quad (8)$$

To find the thermal conductivity of the perforated bricks containing the rubber and air cylinders, by substitute the value of ϕ from equation (8) into equation (1), taking the value k_1 of the perforated bricks is equal 0.66(w/m.°C), [10] the value of k_2 calculated from equation (5) and shows in table 2.

$$K_{STP \text{ with Air in brick}} = k_{bricks}(1 - \phi) + k_{STP \& air} \cdot \phi \quad (9)$$

Table 2. Shows steps to measure the thermal conductivity of scrap tires powder in perforated bricks.

	TYPE	K_1 (W/m.°C)	K_2 (W/m.°C)	ϕ	K_{type} (W/m.°C)
1	STP with Air in cylindrical shape	$K_{STP} = 0.19$ [7]	$K_{air} = 0.024$ [6]	$\phi = 0.112$ from eq.(4)	$K_{STP \& Air} = 0.145$ from eq.(5)
2	STP with Air in 5 hole of brick	$K_{brick12cm} = 0.66$	$K_{STP \& Air} = 0.145$	$\phi = 0.08522$ from eq.(8)	$K_{STP \& Air} = 0.616$ from eq.(9)

2.3 The experimental model and heat source

a) The experimental model

The experimental model involves two parts, a small room (cubic box) to compare two environments (inside and outside the box zone). This was because there was a need for a small room inside the laboratory to compare its temperature with the laboratory temperature. The room was created with dimensions 110 cm * 110 cm * 110 cm of sandwiched material with 5 cm in thickness. The wall samples that were used for comparison were fitted in square-shaped open created in one of its walls with dimensions of 60 cm * 60 cm. A wooden frame is installed inside that hole with identical dimensions and 5 cm in thickness as shown in Fig .2.

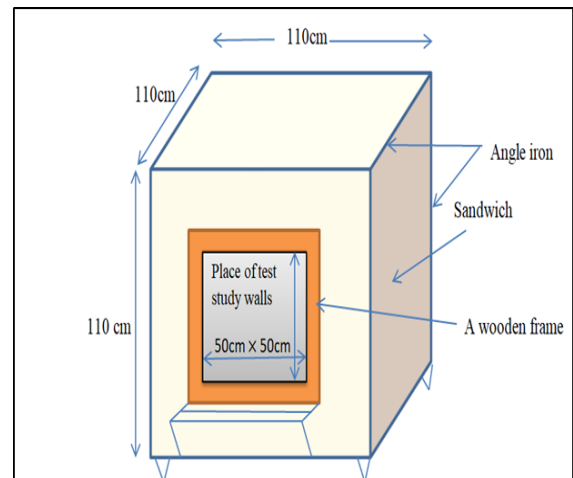


Figure 2. A 3D view for the experimental room (adiabatic box).

b) Heat source

To simulate solar radiation inside the laboratory, an iron structure was created to carry lamps that highlight the sample under study, which we called a solar simulator. It consisted of the following:

- The structure made of iron is a rectangular section 2.5 cm×10 cm and with dimensions of inside 50cm ×50cm. This frame is attached to a steel pole ended with a circular base.
- The heat generated with four lamps with a capacity of each lamp is 1000 watts, the dimensions of 25 cm x 15 cm. These lamps are fixed inside the iron structure, as shown in Fig .3.
- An electrical board that contains a circuit breaker to separate and connect each lamp from the lighting lamps, 4 circuit breakers, each with a capacity of 10 amperes. This board is installed on the side of the iron frame.
- A voltage regulator is worked to control the intensity of the incident lighting from the lamps by increasing and decreasing the voltage. The capacity of this regulator is about 10000 watts.



Figure 3. Heat source or solar simulator

2.4 Preparing test walls samples

Test models were built inside the wooden frame with dimensions of (50X50 cm), consisting of building materials available in the Iraqi market, perforated bricks with dimensions of 8 cm * 12 cm * 24 cm, cement, and sand. The rubber powder made from old tire scrap and prepared in Al Diwaniyah Tire Factory /ABRAJ Al KUT company. Powder rubber tire scrap was used in perforated brick holes, it represents the last model. Fig.4 shows the experimental setup for each test wall.

1. The first model included a conventional wall without scrap tire powder(No STs)
2. The second model a conventional wall containing scrap tire powder(STP-I) in the outer perforations line from the wall facing to the heating source as shows in fig.4 .

For the test models, after the heat source was turned on for 8 hours on the external surfaces, the temperature readings were taken by placing the temperature sensors type (K) on the outer and inner side of the wall and in the middle of the wall. The readings data was recorded by using a data

logger (AT4516) and these results are compared with the results achieved from the traditional wall.

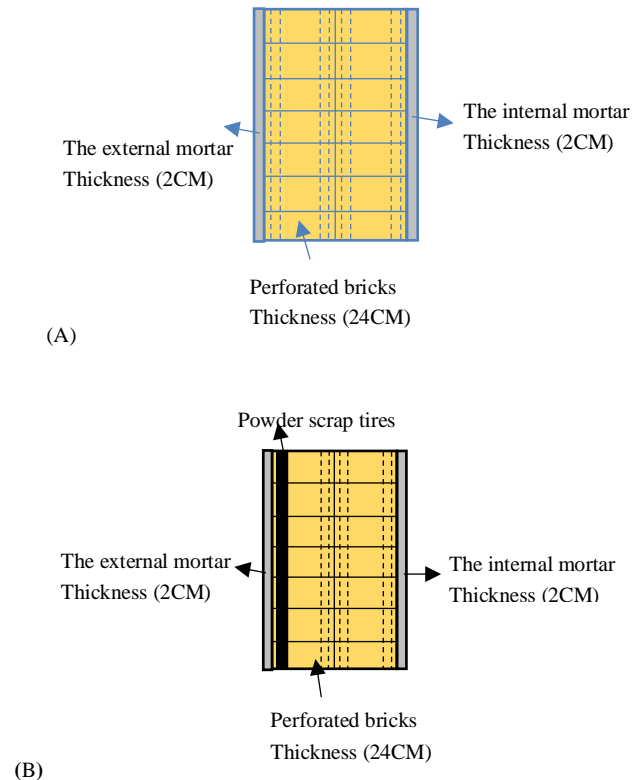


Figure 4. (A)The first model shows a conventional wall without scrap tire powder (No STs), and(B) the second model shows a conventional wall that contains scrap tire powder(STP-I) in the front holes facing the heating source.

1-For first model

Building a model number one with dimensions of 50 cm * 50 cm * 28 cm inside the wood frame using perforated bricks, sand, cement, and coating from the inside and outside as shown in Fig .5. After the wall becomes completely dry, the temperature sensors are installed on the front side of the wall outside the small room and the backside of the wall inside the small room and in the middle of the wall as well, and a sensor is also placed in the middle of the small room to measure the temperature change in it, and then heat is projected by the lighting on it from the solar simulator. as shown in figures.6& 7. The mechanism referred to earlier in this chapter, which is placed 50 cm from the front of the wall, and the solar simulator is run for eight hours, and the intensity of the incident light is read in units of watts of square meters on the front wall every hour using the solar radiation meter. The multi-channel thermometer measures the temperatures in each sensor in addition to measuring the laboratory temperature during the heating period of the wall using solar simulation. All recorded data are saved in the Excel program and shown in fig.8.

2-For second model

We follow the same steps as in the first model, but by using scrap tires powder in the holes in the bricks (15g/hole), as shown in the figures 8,9 and



Figure 5. Steps of build model NO. 1

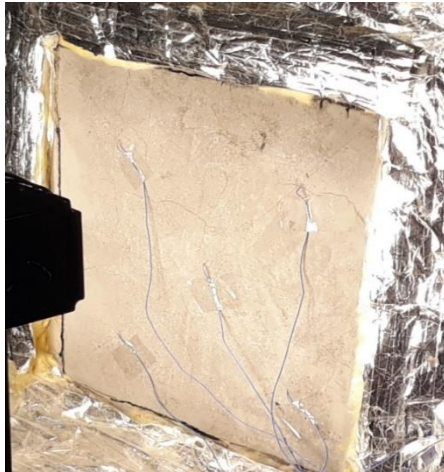


Figure.6. Install sensors on both sides of the wall and in middle of the room



Figure.7. Apply heat source about 1200 w/m² and measurement of temperatures by data logger AT4516

2. Parameters used in this study

The range (R): is the difference between the maximum and minimum temperatures (Eq. (1)), calculated as follows [5]:

$$R = T_{max} - T_{min} \quad (1)$$

Decrement factor: is an important factor in building energy consumption calculations, which is the ratio between an amplitude of the internal wall temperatures to an amplitude of the exterior wall temperatures and symbolized by the symbol (f)[13].(Eq.(2))



Figure8. Put 15g of scrap tire powder into one hole



Figure 9. Put the tire scrap power in the line of the outer holes during construction



Figure 10. Apply heat source and measurement of temperatures in model No.2

$$f = \frac{A_i}{A_E} = \frac{(T-I)_{Max} - (T-I)_{Min}}{(T-E)_{Max} - (T-E)_{Min}} \quad (2)$$

Heat conduction through materials is governed by Fourier’s law, which is based on an observation made based on experimental evidence. Fourier’s law states that heat rate (Q_{cond}) is equal to temperature gradient[4]:

$$Q_{cond} = -KA \frac{\Delta T}{x} \quad (3)$$

The thermal resistance of both the traditional first wall and the second wall containing the scrap tire powder in equations 4 and 5 respectively according to the thermal insulation code[11].

$$R_{(NoSTs)} = \left(\frac{1}{k}\right)_{cement.p} + \left[\frac{1}{k_{bricks24}}\right] + \left(\frac{1}{k}\right)_{cement.p} \quad (4)$$

$$R_{(STP-I)} = \left(\frac{1}{k}\right)_{cement.p} + \frac{l}{k_{STP \text{ with Air in brick}}} + \left[\frac{1}{k_{bricks12}}\right] + \left(\frac{1}{k}\right)_{cement.p} \quad (5)$$

3. Results and discussion

From Fig 11, the temperature on the outer surface increased from 25.04 °C to 88.74 °C when the heating source was turned on, due to the heat absorbed at the outer surface. Because of the thermal diffusivity, the absorbed heat transferred inside the wall, where the temperature in the middle of the wall increased from 25.1 °C to 53.4 °C. The inner surface reaches a temperature of 22.06 °C to 31.74 °C after 8 hours from the heating process take off. From Fig.12, it find that, the laboratory temperature T-L ranges between 18.1 °C-22.3 °C, while the temperature of the test zone T-Z rose from 18.9 to 29.1 due to convection and radiation from the inner wall. With a difference of 6.8 °C between them, after 8 hours of heating.

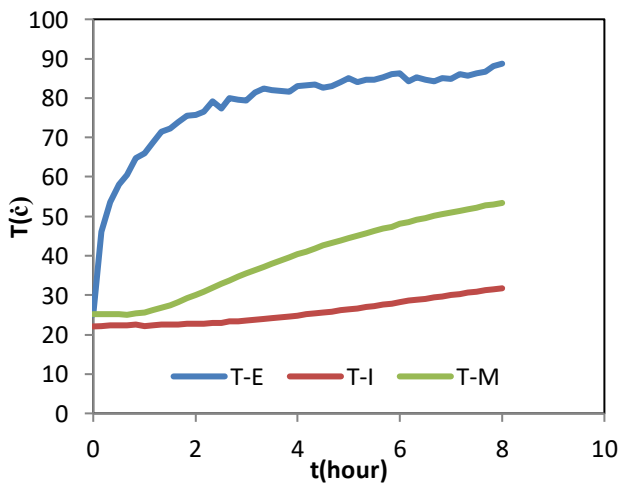


Figure 11. Temperatures in external surface T-E, internal surface T-I and middle of wall T-M in traditional wall without scrap tires powder (No STs).

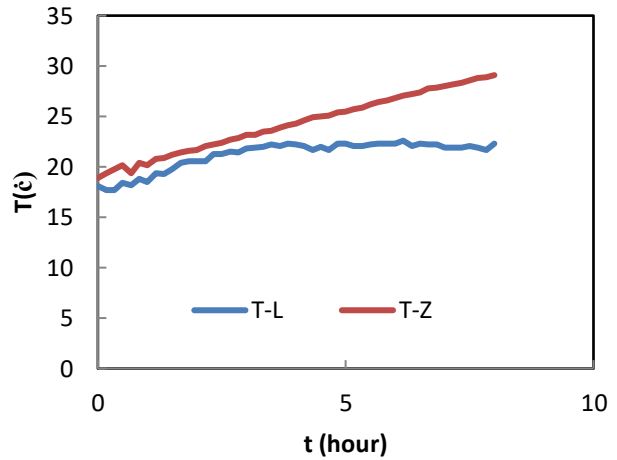


Figure 12. Laboratory temperature T-L vs the temperature of the test zone

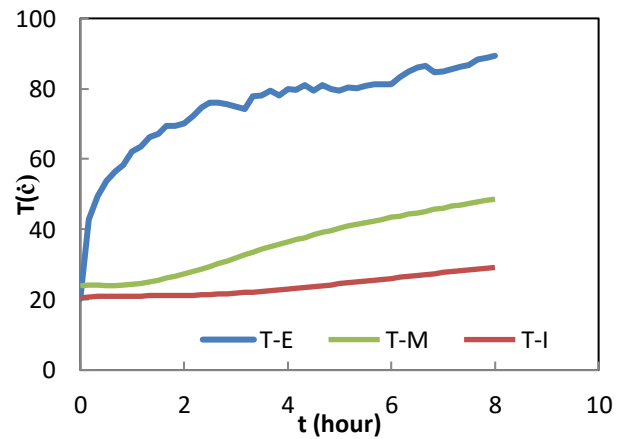


Figure 13. Shows temperatures in laboratory T-L and test zone T-Z in No STs

From Fig.13 for case (STP-I) it can be noticed that the temperature on the outer surface increased from 20.24 °C to 89.36 °C when the heating source was turned on, and thus due to the absorption of the outer surface. As shown in case 2, the absorbed heat transferred inside, the temperature in the middle of the wall increased from 24 °C to 48.6 °C and the inner surface reaches a temperature of 20.52 °C to 29.18 °C . From Fig.15, the laboratory temperature T-L ranges between 17.3 °C-21.9 °C, while the temperature of the test zone T-Z rose from 18.4 °C to 27.1 °C with maximum difference reach 5.8 °C at the end of heating process.

Table 3. Shows temperatures in external, internal & middle of wall as well as test zone & laboratory.

Section	No STs		STP-I	
	Max (°C)	Min(°C)	Max(°C)	Min(°C)
T-E	88.74	25.04	89.36	20.24
T-M	53.4	25.1	48.6	24
T-I	31.74	22.06	29.18	20.52
T-Z	29.1	18.9	27.1	18.4
T-L	22.3	18.1	21.9	17.3

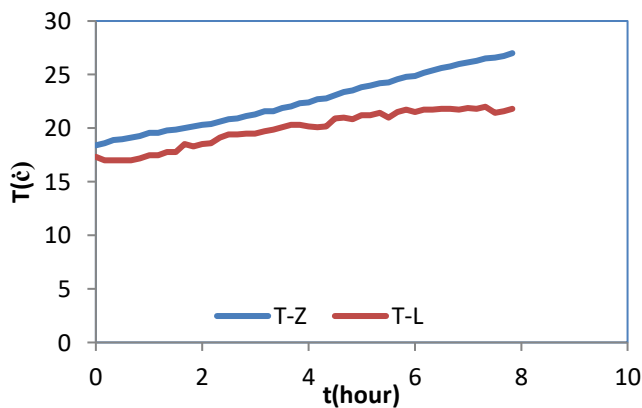


Figure 14. Temperatures in external surface T-E, internal surface T-I, and the middle of wall T-M in traditional wall with scrap tires powder (STP-I).

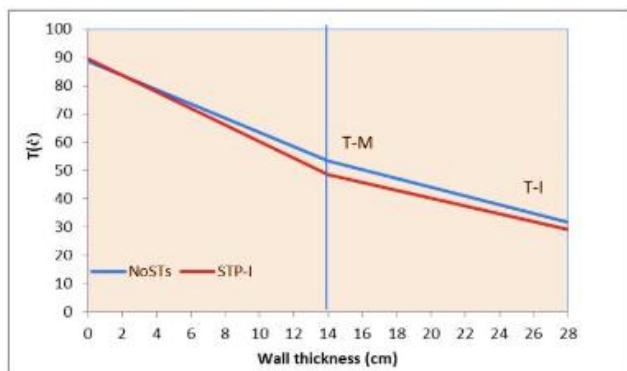


Figure 15. Shows temperatures in laboratory T-L and test zone T-Z in STP-I

Table No. 4, summarizes the maximum and minimum temperatures on the interior and exterior surfaces, in addition to the temperature in the middle of the wall for the beginning and end of the 8-hour heating period. The initial and final conditions for both the laboratory and the test room are all explained in the table below. From the data in Tables 1, 2 and 3 the thermal insulation parameters range on external, internal surfaces, decrement factor (f), and heat conduction, are summarized as shown in Table 4 below.

Table 4. Shows the range on external & internal surfaces, decrement factor (f) and heat conduction for both cases (No STs) & (STP-I)

Section	R-E (°C)	R-I (°C)	f	q (W m ⁻²)
No STs	63.7	9.68	0.15	96.33
STP-I	69.12	8.66	0.125	78.41

From the above results, it can be concluded that the amount of heat transferred through the second wall decreased to 78.41(W/m²) due to the presence of scrap powder in the holes of the bricks, and this is a good and

encouraging indicator in the role of this material ST in thermal insulation. Also, the inner surface temperature decreased by 2.56 °C. The decrement factor also slows down from 0.15 to 0.125, indicating an increase in the wall's ability when adding scrap tire powder to reduce the amplitude of the temperature on the outer surface to that which is on the inner surface.

Authors' contribution

All authors contributed equally to the preparation of this article.

Declaration of competing interest

The authors declare no conflicts of interest.

Funding source

This study didn't receive any specific funds.

REFERENCES

- [1] Mohammed, B.S., et al., Properties of crumb rubber hollow concrete block. *Journal of Cleaner Production*, 2012. 23(1): p. 57-67.
- [2] Iraqi, C., *Iraqi Central Statistical Organization Yearly Statistics*, Ministry of Planning Baghdad. 2020.
- [3] Mohamed, H., J.D. Chang, and M. Alshayeb, Effectiveness of high reflective roofs in minimizing energy consumption in residential buildings in Iraq. *Procedia engineering*, 2015. 118: p. 879-885.
- [4] Jelle, B.P., Traditional, state-of-the-art and future thermal building insulation materials and solutions-Properties, requirements and possibilities. *Energy and buildings*, 2011. 43(10): p. 2549-2563.
- [5] Alsaffar, A. and Q.A. Alwan, Energy Savings in Thermal Insulations for Sustainable Buildings. *Journal of Engineering*, 2014. 20(6).
- [6] Dawood, M.S., The Impact of Using heat Insulation in Reducing Operational Energy and LCA Emission in Local Building. *The iraqi journal of architecture and planning*, 2017. 13(4): p. 54-67.
- [7] Yesilata, B., H. Bulut, and P. Turgut, Experimental study on thermal behavior of a building structure using rubberized exterior-walls. *Energy and Buildings*, 2011. 43(2-3): p. 393-399.
- [8] Fadiel, A., et al., Use of crumb rubber to improve thermal efficiency of cement-based materials. *American Journal of Engineering and Applied Sciences*, 2014. 7(1): p. 1-11.
- [9] Romero-Flores, M., et al., Thermal performance of scrap tire blocks as roof insulator. *Energy and Buildings*, 2017. 149: p. 384-390.
- [10] Saber, D., & Hasan, M. (2021). Experimental investigation of mini-channel heat sink with nano-enhanced phase change materials. *Al-Qadisiyah Journal for Engineering Sciences*, 13(4), 253-261. <https://doi.org/10.30772/qjes.v13i4.687>
- [11] Ghafour, Q.J.A. and B.K. Mahmoud, Experimental Study of the effect of closed cavity wall on buildings cooling loads saving. *Journal of Engineering*, 2015. 21(1): p. 1-12.
- [12] Benazzouk, A., et al., Thermal conductivity of cement composites containing rubber waste particles: Experimental study and modelling. *Construction and Building Materials*, 2008. 22(4): p. 573-579.
- [13] Fathipour, R. and A. Hadidi, Analytical solution for the study of time lag and decrement factor for building walls in climate of Iran. *Energy*, 2017. 134: p. 167-180.