



Radon concentration Measurements in Qaysare of Erbil City

¹Ali H. Ahmed , ²Salih O. Haji , ³Hiwa H. Azeez

^{1,2}University of Salahaddin / College of Science- Physics Dept.

³University of Salahaddin / College of Education- Physics Dept.

¹aha66sara@uni-sci.org , ²Salih_omer@yahoo.com , ³hiwa.azeez@gmail.com

Received date: 5 / 3 / 2015

Accepted date: 2 / 6 / 2015

ABSTRACT

In this study the assessment of indoor radon concentration in the air of Qaysare in Erbil city have been studied by using CR-39 Solid–State Nuclear Track Detector Technique. A total of 18 selected zones inside the suq have been selected to place the dosimeters. The average radon concentration was found to be 21.54 ± 8.017 Bq/m³ ,which is fortunately lower than the standard international limit from 200-600 Bq/m³ as recommended by ICRP, IAEA. The potential alpha energy concentration and annual effective dose have been calculated. A proportional relationship between the annual effective dose and radon concentration within the studied region has been certified.

Keywords: Radon, CR-39, Natural Radioactivity, Effective Dose.

قياس تركيز غاز الرادون في قيصرية مدينة اربيل

علي حسن احمد¹ ، صالح عمر حاجي² ، هيوا حمد عزيز³

^{1,2}قسم الفيزياء / كلية العلوم / جامعة صلاح الدين

³قسم الفيزياء / كلية التربية / جامعة صلاح الدين

¹aha66sara@uni-sci.org , ²Salih_omer@yahoo.com , ³hiwa.azeez@gmail.com

تاريخ قبول البحث: 2015 / 6 / 2

تاريخ استلام البحث: 2015 / 3 / 5

المخلص

في هذه الدراسة استخدمت تقنية كواشف الأثر النووي البلاستيكية (CR – 39) لحساب تركيز غاز الرادون في الهواء في الاماكن المغلقة داخل السوق القيصري في مدينة اربيل. تم اختيار ما مجموعه 18 منطقة مختارة داخل سوق لوضع مقاييس الجرعات . تم العثور على متوسط تركيز الرادون $(8.017 \pm 21.54) \text{ Bq/m}^3$ وهو أقل من الحد المسموح بها في المعايير الدولية وهي بحدود $(200-600 \text{ Bq/m}^3)$ التي يوصي به الوكالتين ICRP, IAEA. تم حساب تركيز طاقة جسيمات ألفا والجرعة الفعالة السنوية. وجدت أن هناك علاقة طردية بين الجرعة الفعالة السنوية و تركيز الرادون في المنطقة التي شملتها الدراسة.

الكلمات الدالة: رادون، كواشف CR-39، الجرعة الفعالة، نشاط الإشعاع الطبيعي.

1.INTRODUCTION

Solid State Nuclear Track Detectors (SSNTDs) are insulating solids both naturally occurring and man-made. There are several types of these detectors including inorganic crystals, glasses and plastics. International studies of radon indoors and in the workplace have shown that the dose contribution due to the inhalation of ^{220}Rn and its short-lived decay products have been detected as a significant component of the total radon contribution. To measure both ^{222}Rn and ^{220}Rn gas concentrations in the environment, solid state nuclear track dosimeters are commonly used in dual chambered passive diffusion monitors. It is possible to differentiate between ^{222}Rn and ^{220}Rn gas due to the relative differences in their

half-lives which are 3.82 days and 55.6 s respectively [1]. Radon which is a topic of public health concern has been found to be a ubiquitous indoor air pollutant in homes to which all persons are exposed [2].

Radon has no colour, odour or taste and is chemically inert. Its source is from uranium. As the uranium molecule decays to form stable lead, a process taking many, many years, it changes from one radioactive element to another in a sequence known as the Uranium Decay Cycle [3]. Radon is the largest and most variable contributor of public exposure to radiation. It is estimated that the annual effective dose by radon and its progeny from the inhalation of air is about 50% of natural public exposure to high levels of radon can cause lung cancer [4].

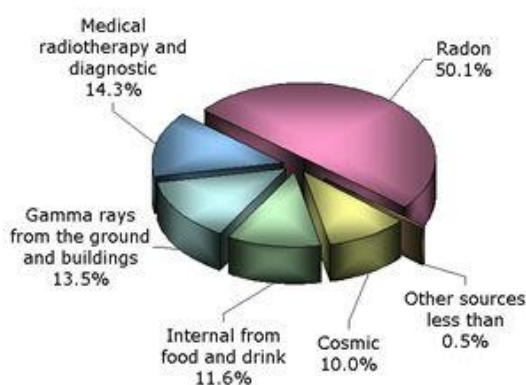


Figure (1-1): Sources of Radiation Exposure; from NCRP Report [5].

Radon can enter buildings through the floor, and in cases where ventilation is poor, the radon concentration can build up to high levels, exposing the occupants via inhalation.[6].

Alpha particles are high linear energy transfer (LET) radiation and carry sufficient energy to cause permanent damages to DNA [7]. In addition, a number of in vitro studies using radon gas were defined for understanding the early changes induced at cellular and molecular level and DNA repair of these events. The studies proved that radon is capable of inducing significant chromosome damage event at very low doses and low dose-rate [8]. The studies proved that radon is capable of inducing significant chromosome even at very low doses and low dose- rate [9]. As well as, high ratio of indoor radon has impact of the male fertility [10], this more effects on the infertility of the male children.

Radon is responsible for the majority of the public exposure to naturally occurring radiation. The United Nation Scientific Committee on the Effects of Atomic Radiation (UNSCEAR) reported that radon and its progenies cause on average a radiation dose of 1.3

mSv per year and 79% of the radiation dose is due to the indoor radon inhalation. Therefore, each country makes national surveys of the actual radon concentration and implements radon management measures to protect its citizens [11].

The main source of radon in the air of a dwelling is the ground under buildings, which is responsible for 80% of the whole radon concentration inside a typical house [12].

Radon concentration in a dwelling mainly depends on the concentration of this gas in ground air, permeability of soil on which the building is erected and tightness of a house construction. Radon concentration in the air of dwellings is subject to seasonal and twenty-four hour variations. Moreover, radon contributes most to the effective annual dose received by people living in the area of normal gamma radiation background [13]. In Erbil city (the Capital of Iraqi Kurdistan Region), and despite of its historical background as the oldest city still being populated, there is a few number of works concerning the radon concentration measurements in closed areas [14]. For this the idea of radon concentration measurements in the semi-closed and ancient bazar (Qaisare) has been adopted to assess the radon levels inside and making comparison with the standard permissible values.

In solid state track detectors as CR-39 and other polycarbonate compounds, the path of an ionizing particle along the damaged trail is revealed by a conical pitch which is visible to microscopic analysis after a chemical etching. The pitch characteristics depend on properties of the etching solution and on travelling ion, so to allow determination of ion properties. So nuclear track detectors (NTDs) register alpha particles emitted by radon gas and its progeny in the form of tracks, which will become visible under the optical microscope upon suitable chemical etching of the NTDs [15]. Interesting of radon dosimeters depended on the calibration factor, this factor has a wide range depends not only on the geometry of the used configuration but also on many parameters such as; type of the used detector via their etching conditions, detector efficiency and the dosimeter dimensions [16-17].

2.MEASUREMENT METHODS

Diffusive chambers with CR-39 type track detectors with 500 μm thickness and dimensions of 1.5 cm x 1.5 cm were used in the present study. Dosimeters, such as shown in **Figure (1)**, containing the prepared nuclear track detectors were designed and distributed (hanged) in 18 different zones in the ancient Erbil Qaysary, Figure2. After an exposure time of 60 days, the dosimeters were collected and chemically etched (6N NaOH at 70C^o over 6

hour period) [18]. To account the number of tracks per cm^2 occurred in each detector an optical microscope with a magnification of 150X was used.

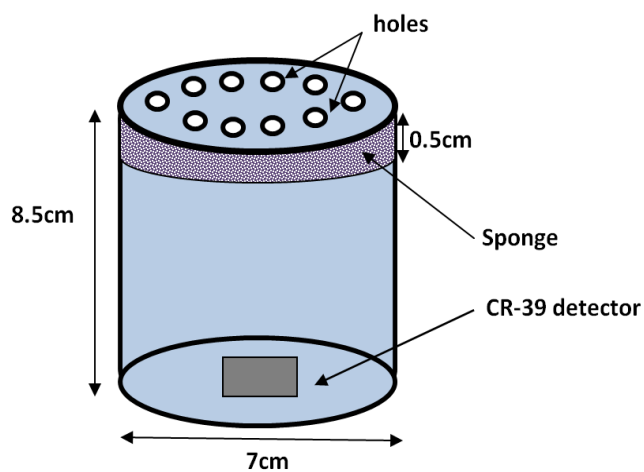


Figure (1): Schematic diagram showing the geometry of radon dosimeter used in the study.(reverse) [14].



Figure (2): Dosimeters in Qaisare.

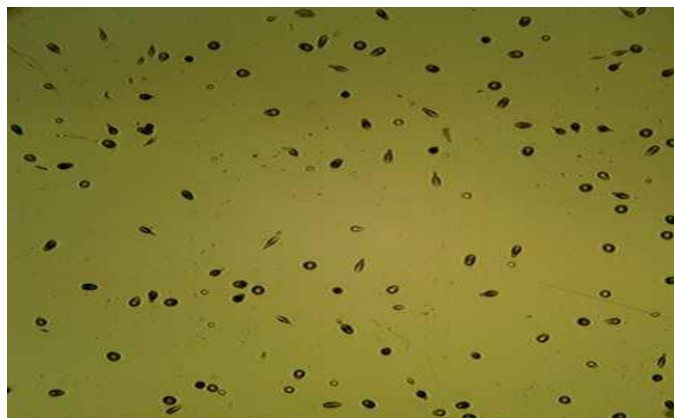


Figure (3): Track occurred in each detector

3.CALCULATIONS AND EVALUATIONS

The CR-39 detectors exposed to the air inside the shops will be affected by radon and its daughters in the volume of air around them. In relating the observed track densities to the radon and its daughter activities per unit volume of air, the following equation has been used [19]:

$$\rho = x A \dots\dots\dots (1)$$

Where: ρ : is the number of tracks per cm^3 per unit volume.

x : is a constant with dimension of length (cm)

A : is the alpha activity per unit volume (disintegrations per unit time per cm^3)

The detailed calculation related to the equation has been published earlier [19]. The value of the constant x is the sum of separate constants calculated for all isotopes (^{222}Rn , ^{213}Po , ^{214}Po). In order to estimate the radon concentration, experimental method for radon detection and measurement are based on alpha-counting of radon and its daughters. The track density was calculated in terms of number of tracks per mm^2 , the average number of tracks was determined by processing an unexposed films CR-39 detector under identical etching condition. The signal measured by etched track detectors is integrated track density, ρ (track. mm^{-2}) recorded on the detector, (K) the average value of the calibration factor of ^{222}Rn in

[(Bq. daym⁻³) per (tracks. mm⁻²)] and (T) exposure time (day) has been applied to determine the activity of ²²²Rn concentration (C_{Rn}) in (Bq/m³) using the following equation: [20,21]:

$$CRn = \rho / T K_i \dots\dots\dots (2)$$

where T is the exposure time, K_i is the calibration factor with the dimension of length or equivalent to (tracks.m⁻².d⁻¹ per Bq.m⁻³). ρ is the Track Density.

Almost all measurements of radon levels in the home or outdoors are expressed as the concentration of radon in units of picocuries per liter of air (pCi/liter), or in SI units as Becquerel per cubic meter (Bq/m³), or radon daughters are expressed in working levels (WL), which is given by[22]:

$$C_p (WL) = \frac{F C_{Rn}}{3700} \dots\dots\dots (3)$$

where: F is the equilibrium factor and recommended as F_{Rn} = 0.4 [23]. Furthermore Qureshi. A et.al. [24] proposed a method to calculate the annual effective dose using the Working Level Month (WLM) units, and is given by Eq. (4):

$$(WLM) = \frac{F \times t \times C_{Rn}}{170 \times 3700} \dots\dots\dots (4)$$

Therefore, the relation between the effective dose and Radon concentration is given by:

$$H_E = G C_{Rn} \dots\dots\dots (5)$$

where: G is constant.

In this study measurement of indoor radon concentration (C_{Rn}), potential alpha energy concentration (PAEC) and annual effective dose (H_E) have been performed.

The potential alpha energy concentration (WL) was calculated using Eq. (3), annual effective dose equivalent (WLM/year) and effective dose also has been calculated using Eqs. (4) and (5), respectively.

4.RESULTS AND DISCUSSION

The recorded values of radon concentration (Bq/m³) in different zones inside Erbil-Qaysare, Annual effective dose using the Working Level Month (WLM) units are presented in Table (1). The histogram schemes of these data are then shown in Figures (3) through (5) in which the results of different zones were declared obviously. The calculated average Radon concentration was (21.54 ± 8.017) Bq/m³. This value is lower than the radon references level

which ranges from 200-600 Bqm-3 as recommended by ICRP, IAEA.[25,26] . On the other hand, radon concentration was varying from region to another, for example the activity of radon concentration in (Gold Smith) zone (5, 7, 10, and 15) is more than the other zones, while the minimum value was in (Shops selling textiles and clothing) Zone (11 and 13).

The comparison between the maximum and minimum values of radon activity concentration obtained at the different zones is given in Table 2. It found that in the Gold smith zones, the maximum radon concentration ranged between 26.05 - 45.55 Bq/m³, while the minimum value ranged between 10.41-10.82 Bq/m³ in shops selling textiles and cloths, respectively.

Table (1): Radon concentration in different zones in Qaysare of Erbil city.

Zone No.	C(Rn-222)	PAEC(mWL)	WLM/yr.	He(mSv.yr-1)
1(Cutlery shops)	17.32 ± 3.78	1.87	0.021	0.107
2(house wares)	20.56 ± 3.23	2.22	0.025	0.127
3(perform shops)	24.39 ± 2.13	2.63	0.030	0.150
4(house wares)	21.65 ± 3.03	2.34	0.026	0.133
5(Gold smith)	45.55 ± 3.65	4.92	0.056	0.281
6(perform shops)	23.45 ± 1.35	2.53	0.028	0.144
7(Gold smith)	29.59 ± 3.18	3.19	0.036	0.182
8(Cutlery shops)	15.33 ± 3.57	1.65	0.018	0.094
9(house wares)	21.65 ± 2.17	2.34	0.026	0.133
10(Gold smith)	26.07 ± 3.97	2.81	0.032	0.161
11(Shops selling textiles and clothing)	10.82 ± 0.99	1.17	0.013	0.066
12(Cutlery shops)	16.23 ± 1.61	1.75	0.020	0.100
13 (Shops selling textiles and clothing)	10.41 ± 1.99	1.12	0.012	0.064
14(Cutlery shops)	16.23 ± 1.37	1.75	0.020	0.100
15(Gold smith)	27.55 ± 3.56	2.97	0.034	0.170
16(house wares)	21.64 ± 4.82	2.34	0.026	0.133
17(perform shops)	23.12 ± 2.96	2.49	0.028	0.142
18(Cutlery shops)	16.23 ± 3.83	1.75	0.020	0.100
Average	21.54 ± 8.017	2.32 ± 0.86	0.0266 ± 0.009	0.133 ± 0.049

Table (2): Minimum, maximum and average values of radon concentration (Bq/m³) at different studied zones.

Zone	Radon Concentration (Bq/m ³)		
	Min	Max.	Average ± S.D
Cutlery Shops	15.33	17.32	16.325 ± 0.148
house wares	20.56	21.65	21.105 ±0.141
perform shops	23.12	24.39	23.755 ± 0.587
Gold smith	26.07	45.55	35.81 ±0.226
Shops selling textiles and cloths	10.41	10.82	10.615 ±0.707

From **Figure (6)** one can observe the linearity of relation between radon concentration and effective dose as a consequence of Eq. (4). The slope of the straight line gives the value of constant (*G*) which was determined as $G = 6 \mu\text{Sv}\cdot\text{aY}^{-1}$ [18].

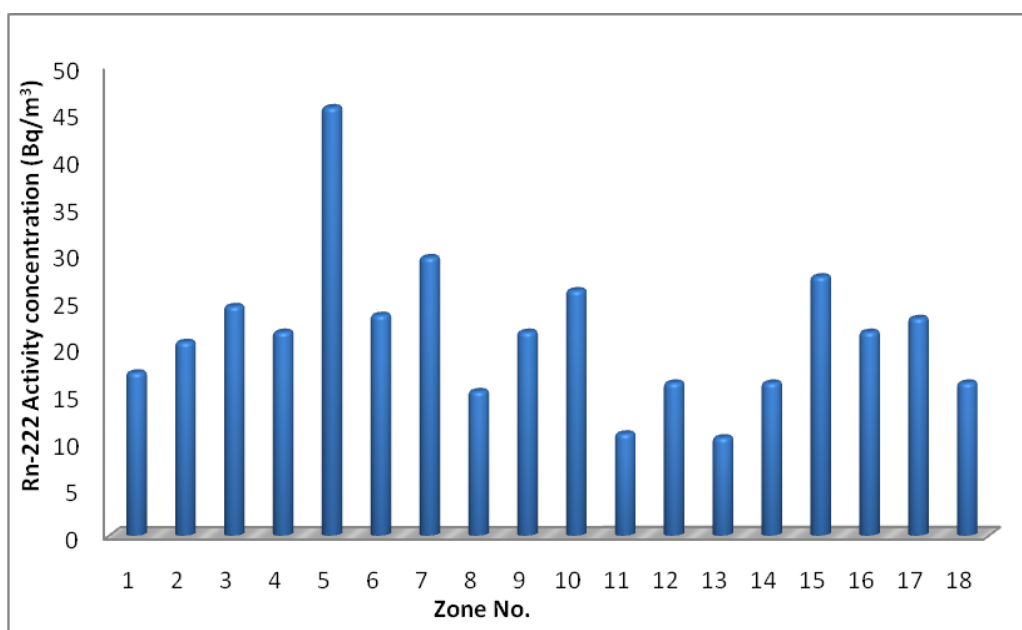


Figure (3): Radon activity concentrations versus Zone numbers

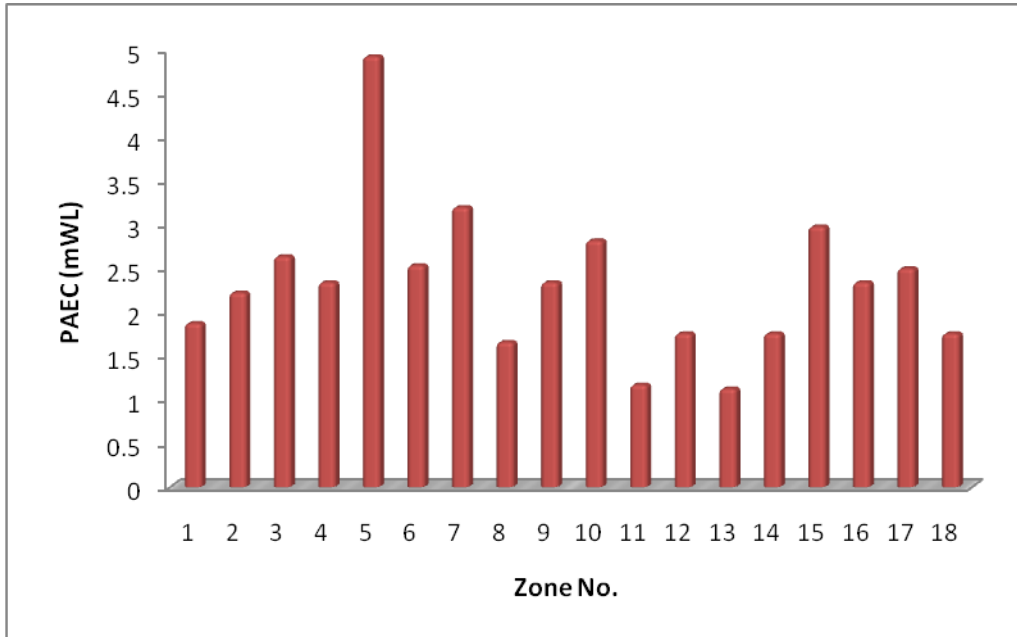


Figure (4): Potential alpha energy concentration (PAEC) versus Zone number.

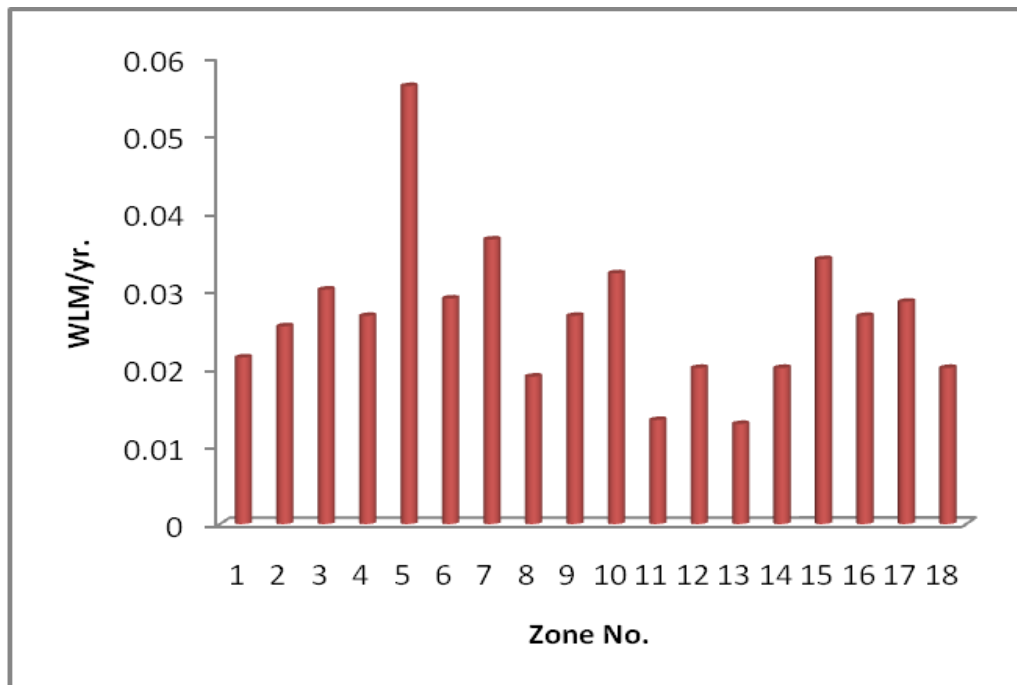


Figure (5): Working Level Month (WLM) versus Zone number.

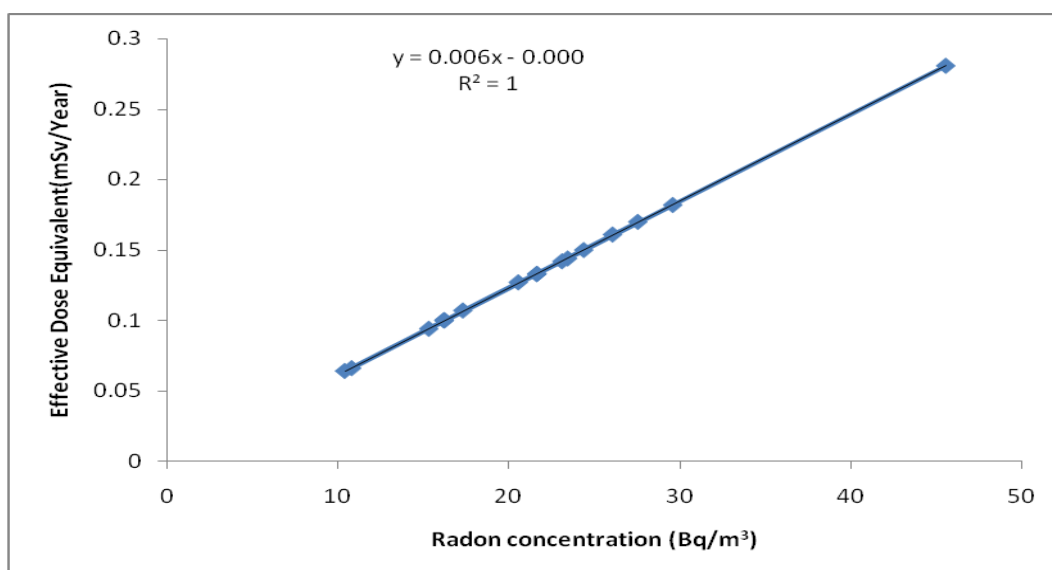


Figure (6): Relationship between effective dose equivalent and radon concentration.

5.CONCLUSIONS

The radon concentration values obtained was varied within the studied zones depending on the height, wide, and ventilation opportunities of qaysare tracks. The recorded values of radon concentration were lower than the standard limits. A linear relationship has been traced between the annual effective dose and the measured radon concentrations.

REFERENCES

- [1] J.M.C., Brown , S.Solomon , R.A. Tinker:” *Development of an energy discriminate CR-39 nuclear track etch dosimeter for Radon-220 gas measurements*. Journal of Environmental Radioactivity, 102 ,901-905,(2011).
- [2] K. Kant, S.b. Upadhyay, G.S. Sharma and S.K., Chakarvarti “ *Measurement of inhalation dose due to radon and its progeny in an oil refinery and its dwellings*". Iran. J. Radiant. Res.,1(4): 181-186. (2004).
- [3] H. I. Asaad, "*Measurement of Radon Activity concentration in Iraqi Kurdistan Soil by Using CR-39 Nuclear Track Detectors*, M.Sc. Thesis, Univ.of Salahaddin, Iraqi Kurdistan. (2004).
- [4] Ahn. Gilhoon and JAl-Kilee, *Construction of an Environmental Radon Monitoring system using CR-39 Nuclear Track Detectors*. Nuclear Engineering and Technology Vol 37 No. 4. (2005).

- [5] A.Birchall and J.W. Marsh “*Radon dosimetry and its implication for risk*”, International Congress Series .81-84. (2005).
- [6] C. H. Park,J.Y. So, K.J.Shin and M.H. Joo. “*Effects of Bed rock Type on the Indoor Radon Concentrations*”, Nuclear Technology & Radiation Protection, Vol. 26, No. 3, pp. 226-232. (2011).
- [7] H.frumkin, J.M. Samet,. Radon, CA Cancer J. Clin.51, 337-344(2001).
- [8] V. Z. Hamza, M.N. Mohankumar, *Cytogenetic damage in human blood lymphocytes exposed in vitro to radon*, Mutation Research 661, 1-9. (2009).
- [9] A. H. Ismail and M S Jaafar. *Relationship between radon concentration, ventilation rate and male infertility*: A Case study in Iraqi Kurdistan. International Journal of Low Radiation .7(3) p.175-187. (2010).
- [10] UNSCEARExposures from Natural Radiation Sources. New Yourk, UN. (2000).
- [11] K. Kozak., J.Mazur., B.Kozlowska and M. Karpinska. “*Correction factors for determination of annual average radon concentration in dwellings of Poland resulting from seasonal variability of indoor radon*”., Applied Radiation and Isotopes 69, 1459-1465. (2011).
- [12] S.Samal and F. Khdir. “*Diffusion Cup Technique for Long term Radon Gas Activity Measurement Using CR-39 Nuclear Track Detector*”., MSc. Thesis , Salahaddin University, Iraq. (2011).
- [13] M.Younis Atia, Khetam Abd-Aladel, Hameed B. Mahood , A.Muhammed and C.Hssoni “*Determination of Radon-222 Concentration in Center of Misan City Using Nuclear Track Detectors CR-39*”, Journol of Basra Searches, No(36) ,6(15B) (2010).
- [14] F.Abu-Jarad , J. h. Fremlin, and R.Bull, “*A study of Radon Emitted from Building Materials using Plastic α - track detectors*”, Phys. Med. Biol. 25, 683-694. (1980).
- [15] S.A. Durrani, R.,Ilic,. Radon measurements by etched track detector: *Application in radiation protection*. Earth Science and Environment. World Scientific Publishing Co. pte. Ltd. (1997).
- [16] M.,Mansy , M.A.Sharaf , S. U., El-Kamees, M.,Abo-Elmagd. *Theoretical calculation of SSNTD response for radon measurements and optimum diffusion chambers dimensions*. Radiat. Meas. 41, 222. (2006).
- [17] D., Nikezic, K.N.,Yu. *Computer program TRACK_TEST for calculation parameters and plotting profiles for etch pits in nuclear track materials*", Computer Physics

Communication. 174, 60.(2006).

[18] J. Milad Ali , “ *Radon Concentration in Al-Gazalia City, Baghdad, Iraq*” Journal of Al-Nahrain University Vol.16 (1), March, pp.121-128(2013).

[19] A.F.Hafez, , A.S.Hussein, , N.M.Rasheed A study of radon and thoron release from Egyptian building materials using polymeric nuclear track detectors, Applied Radiation and Isotopes, Vol.54, pp. 291-298.(2001).

[20] A.J. Khan, A.K. Varhney, R. Prasad, R.K. Tyagi, T.V. Ramachandran, “*Calibration of a CR-39 plastic detector for the measurement of radon and its daughters in swellings*”, Nucl. Tracks. Radiat. Meas. 17, 497-502. (1990).

[21] UNSCEAR (United National Scientific Committee on the Effects of Atomic Radiation), Report to the General Assembly, United Nations, New York, (2000).

[22] A.A. Qureshi, D.M. Kakar, M. Akram, N.U. Khattak, M. Tufail, and K. Mehmood, “*Radon concentrations in coal mines of Baluchistan, Pakistan*”, Journal of Environmental Radioactivity 48 (2), 203-209. (2000).

[23] ICRP (International Commission on Radiological Protection), Protection against Radon-222 at home and at work, in: Annals of ICRP, Pergamon press, Oxford, , pp. 1-45. (1994).

[24] J.Vaupotic, I.Celikovic , N.Smrekar, Z. S. Zunic and I.Koba , “*Concentrations of ^{222}Rn and ^{220}Rn in Indoor Air*”. Acta Chim. Slov, 55, 160-165. (2008).

[25] IAEA (International Atomic Energy Agency), Radiation protection against radon in work places other than mines, IAEA safety report series No.33, (Vienna :IAEA) 2003.

[26] International Commission on Radiological Protection. Protection against radon-222 at home and at work. Oxford: Pergamon Press; ICRP Publication 65 (1993).

AUTHOR



Ali Hassan Ahmed: received B.Sc, M.Sc and Ph.D in Physics& Nuclear Physics from Salahaddin University/Arbil-Iraq in 1988, 1992 and 2006 respectively. During 1993 till now he worked as a lecturer in Physics Dept/ College of Science. At 2009 till now as a Asst. Prof. in College of Science/Salahaddin University. He now vice Dean of College of Science for Higher Education and Scientific affairs.